

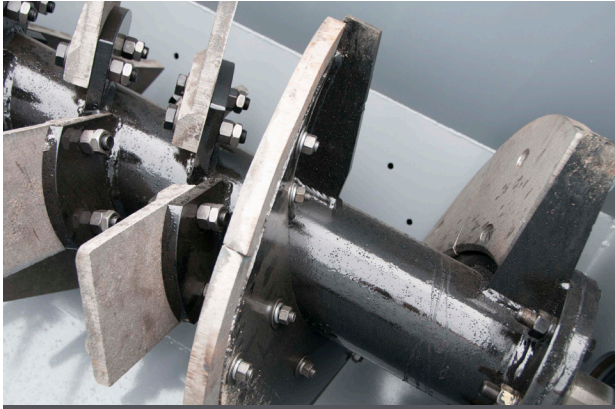


COARSE MATERIAL WASHER

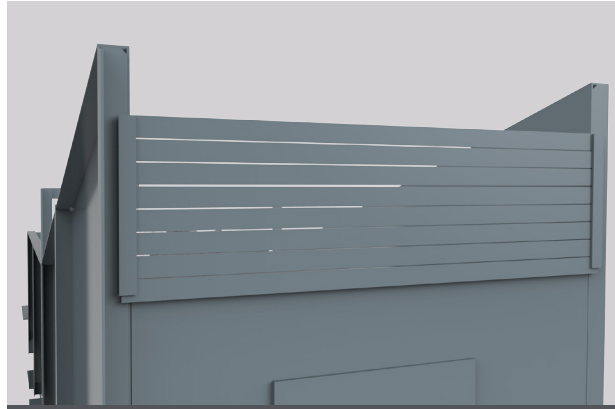
Up to 550 TPH

- Adjustable screw shaft design allows producers to **process a wider range of material** sizes. ■
- Heavy-duty angle iron skid frame is **stronger than formed plate** designs and installs without expensive cranes. ■
- Broadest group of product designs in the industry for **very application-specific** offerings. ■
- Motors, drive parts and pillow block bearings are **standard, off-the-shelf components** for easy replacement. ■

FEATURES



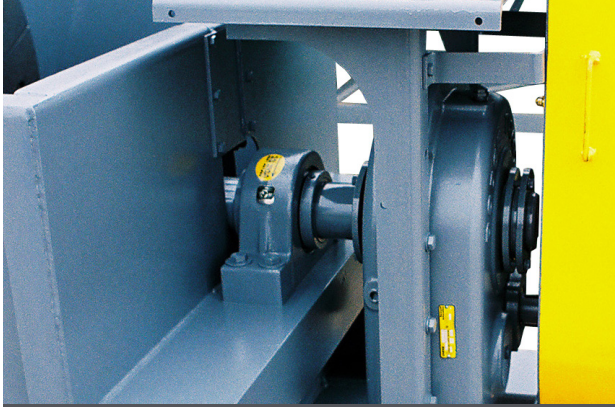
A532 WEAR SHOES AND PADDLES



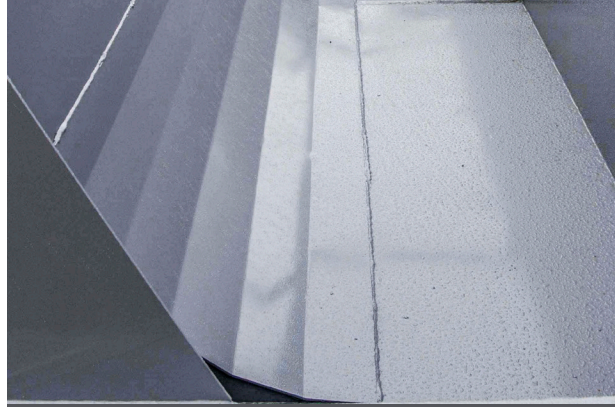
ADJUSTABLE OVERFLOW GATE



SLINGER PROTECTS LOWER BEARING



GEAR REDUCER



CURVED BELLY PAN



FLUSH-BACK NOZZLE

WASHING SCREW

- Single or twin models
- Combination of flights and paddles dependent on scrubbing requirements
- Flights and paddle bases are protected with replaceable A532 wear shoes and paddles
- Extended shaft and slinger protects lower bearing from water leakage

DRIVE SYSTEM

- Electrical 3-phase, 60Hz, 460V motor; can also be configured to match local power requirements, if necessary
- Shaft-mounted gear reducer
- Belt and guarding

WASH BASIN

- Flush-back nozzle enhances dewatering efficiency
- Adjustable overflow gates
- Heavy-duty skid frame
- Lifting points
- Drain for easy clean out
- Support legs for 15°



DISCHARGE CHUTE

- DISCHARGE CHUTE
- HYDRAULIC DRIVE



PROTECTIVE GUARDING

- PERSONAL SAFETY COVERS
- GUARDING



BOLT ON PADDLES INCREASE SCRUBBING

- URETHANE WEAR SHOES
- BOLT ON PADDLES

IN-STOCK PARTS



WEAR SLEEVE AND LOWER SEAL

- STAINLESS STEEL WEAR SLEEVE
- HEAVY-DUTY RUBBER LOWER SEAL
- RUBBER WEAR SHOES



MOTORS

- HEAVY WALLED STEEL PIPE SHAFTS
- BEARINGS
- BELLY PANS



SHAFT AND WEAR SHOES

- LOWER BEARING RETROFIT KITS FOR OTHER MANUFACTURERS' WASHERS
- ELECTRIC OR HYDRAULIC DRIVE COMPONENTS

SPECIFICATIONS

COARSE MATERIAL WASHER - SINGLE SCREW

| Screw Size in x ft (mm x m) | Estimated Capacity TPH (MTPH) | Screw Speed RPM | Motor Size HP (kw) | Max. Material Size inch (mm) | Estimated Empty Weight lbs (kg) | Discharge Chutes Weight lbs (kg) |
|--------------------------------|----------------------------------|--------------------|-----------------------|---------------------------------|------------------------------------|-------------------------------------|
| 24" x 18' (610 x 5) | 60 - 75 (50 - 60) | 40 | 15 (11.0) | 1.5" (40) | 8,000 (3,600) | 120 (50) |
| 30" x 18' (760 x 5) | 100 - 125 (90 - 110) | 35 | 20 (15.0) | 2.0" (50) | 9,000 (4,000) | 140 (60) |
| 30" x 24' (760 x 7) | 100 - 125 (90 - 110) | 35 | 25 (18.5) | 2.0" (50) | 10,700 (4,800) | 140 (60) |
| 36" x 18' (915 x 5) | 150 - 175 (135 - 160) | 30 | 25 (18.5) | 3.0" (75) | 11,300 (5,100) | 150 (70) |
| 36" x 28' (915 x 10) | 150 - 175 (135 - 160) | 30 | 30 (22.0) | 3.0" (75) | 14,400 (6,500) | 150 (70) |
| 44" x 20' (1,100 x 6) | 200 - 250 (180 - 230) | 26 | 30 (22.0) | 3.0" (75) | 15,000 (6,700) | 240 (100) |
| 44" x 32' (1,100 x 10) | 200 - 250 (180 - 230) | 26 | 50 (37.0) | 3.0" (75) | 19,100 (8,700) | 240 (100) |
| 48" x 24' (1,200 x 7) | 220 - 275 (200 - 250) | 24 | 40 (29.5) | 3.5" (90) | 21,500 (9,800) | 280 (130) |
| 48" x 32' (1,200 x 10) | 220 - 275 (200 - 250) | 24 | 50 (37.0) | 3.5" (90) | 25,500 (11,600) | 280 (130) |

COARSE MATERIAL WASHER - TWIN SCREW

| Screw Size in x ft (mm x m) | Estimated Capacity TPH (MTPH) | Screw Speed RPM | Motor Size HP (kw) | Max. Material Size inch (mm) | Estimated Empty Weight lbs (kg) | Discharge Chutes Weight lbs (kg) |
|--------------------------------|----------------------------------|--------------------|-----------------------|---------------------------------|------------------------------------|-------------------------------------|
| 30" x 18' (760 x 5) | 200 - 250 (180 - 230) | 35 | (2) 20 (15.0) | 1.5" (40) | 13,700 (6,200) | 280 (130) |
| 30" x 24' (760 x 7) | 200 - 250 (180 - 230) | 35 | (2) 25 (18.5) | 2.0" (50) | 19,300 (8,700) | 280 (130) |
| 36" x 18' (915 x 5) | 250 - 300 (230 - 270) | 30 | (2) 25 (18.5) | 3.0" (75) | 16,800 (7,600) | 280 (130) |
| 36" x 28' (915 x 10) | 250 - 300 (230 - 270) | 30 | (2) 30 (22.0) | 3.0" (75) | 23,000 (10,500) | 280 (130) |
| 44" x 20' (1,100 x 6) | 450 - 500 (400 - 450) | 26 | (2) 30 (22.0) | 3.0" (75) | 28,400 (12,900) | 350 (160) |
| 44" x 32' (1,100 x 10) | 450 - 500 (400 - 450) | 26 | (2) 50 (37.0) | 3.0" (75) | 36,600 (16,600) | 350 (160) |
| 48" x 24' (1,200 x 7) | 450 - 550 (400 - 500) | 24 | (2) 40 (29.5) | 3.5" (90) | 39,600 (18,000) | 450 (200) |
| 48" x 32' (1,200 x 10) | 450 - 550 (400 - 500) | 24 | (2) 50 (37.0) | 3.5" (90) | 42,500 (19,300) | 450 (200) |