



WASHING EQUIPMENT PRODUCT HANDBOOK





SUPERIOR WASHING EQUIPMENT

WASHING/CLASSIFYING EQUIPMENT

- P/3 Classifying Systems
- P/13 Aggredry® Dewatering Washer
- P/19 Fine Material Washer
- P/25 Coarse Material Washer
- P/29 Dewatering Screen
- P/33 Blade Mill Washer
- P/37 Log Washer
- P/41 Aggre-Washer™ Portable Plant
- P/47 Rotary Screen
- P/49 Aggre-Saver Washout System





CLASSIFYING SYSTEMS

Up to 12' x 48'

- Groundbreaking, **user-friendly computer controls** blends a higher quality product with highest product output. ■
- High pressure hydraulics for the **fastest control response time**. ■
- Weir to weir measurements equal the **largest tank design** for the highest capacities in the industry. ■
- Diverse collection of stationary, semi-portable and portable designs to meet **specific application requirements**. ■

HIGHLIGHTS



1/ **AR LINED FEEDBOX:** High quality, abrasion resistant liners withstand sandblasting like pressure of slurry mixture.

2/ **VALVE BRIDGE:** An elevated design prevents splashing from deteriorating this valuable component.

3/ **HYDRAULIC TUBING:** Stainless steel hydraulic lines accommodate highest pressures for fastest valve response time.

4/ **HYDRAULIC TANK:** Centered along the valve bridge, this high-capacity, water-cooled tank creates consistent pressure.

5/ **RECIRCULATING PUMP:** Recycles water from tank overflow to supply rising current cells. No fresh water required.

6/ **WEAR PARTS:** Urethane valves, seats and discharge elbows combine high wear life with effective sealing.

7/ **COLLECTING BLENDING FLUME:** High capacity, AR lined component allows for creating up to three products. Optional: urethane liners.

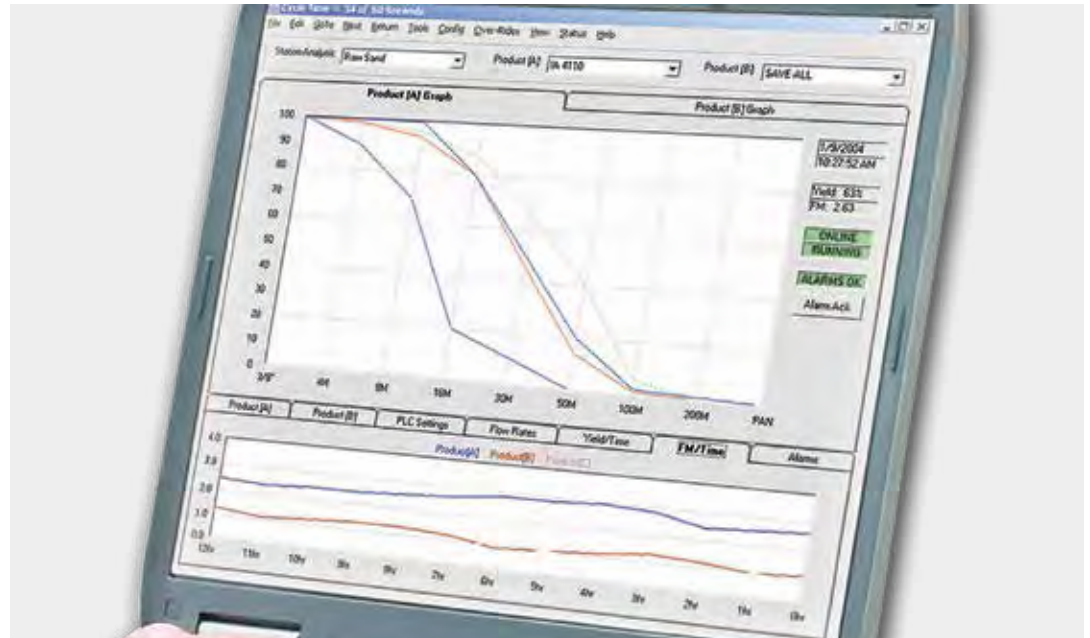
8/ **RISING CURRENT CELLS:** Increases yield by constantly removing misplaced particles from the coarse end of tank.

AGGRE-SPEC III

- Three-method calculations consistently deliver 2% (up to 15%) more productivity than single-method programs
- Re-blends up to two spec products simultaneously
- Holds tight product specs and reduces out-of-spec material
- Unlimited mix design storage capacity
- Microsoft Windows-based control system is familiar and easy to use
- Collects and reports data, displays and tracks real time fineness modulus (FM), yield graphs feed and output gradations
- Stockpile analysis checks finished product against expected product and input settings
- Retrofits to other manufacturers' tanks
- Programmable automatic tank cleanout
- Patented dual tank controls

AGGRE-SPEC I

- Simple intuitive control system
- 10 recipes of two products for 20 product capacity
- Ideal for quarry operations
- Quick start-up
- Programmable automatic tank cleanout
- Alarm history
- Retrofits to other manufacturers' tanks



AGGRE-SPEC III - COMPUTER INTERFACE



AGGRE-SPEC III - INDICATOR PANEL

STATIONARY CLASSIFIERS

FEATURES

- Single or double tanks
- AR lined, triple collecting blending flume
- Valve bridge with railings
- AR lined feed box
- Hydraulic power pack
- Electric motor, 3 phase, 60Hz, 230/460
- Urethane valves, seats and discharge elbows
- Access valves from walkway on control bridge
- Valve and grate allow for a full range of rising current
- Urethane discharge valves and seats are self-aligning
- Urethane discharge elbows provide extended life
- Optional custom-designed support structures and screen tower



CLASSIFYING TANK WITH STAIRWAY



EASILY ACCESS THE VALVES



URETHANE DIRECTION DISCHARGE BOOTS WITH AR LINED FLUME



VALVE AND GRATE



URETHANE DISCHARGE VALVES

STATIONARY CLASSIFIER SPECIFICATIONS

STATIONARY CLASSIFIER - SINGLE TANK					
Tank Size ft (m)	Stations	Estimated Tank Weight lbs (kg)	Estimated Support Structure Weight lbs (kg)*	Estimated Support Structure Weight lbs (kg)**	Estimated Support Structure Weight lbs (kg)***
8' x 20' (2 x 6)	6	12,000 (5,443)	7,140 (3,239)	10,540 (4,781)	12,440 (5,643)
8' x 24' (2 x 7)	7	14,000 (6,350)	7,540 (3,420)	10,940 (4,962)	12,840 (5,824)
8' x 28' (2 x 9)	8	16,000 (7,258)	7,700 (3,493)	11,300 (5,126)	13,000 (5,897)
8' x 32' (2 x 10)	9	18,000 (8,165)	8,580 (3,892)	12,860 (5,833)	14,180 (6,432)
10' x 24' (3 x 7)	7	18,000 (8,165)	8,500 (3,856)	11,900 (5,398)	13,800 (6,260)
10' x 28' (3 x 9)	8	20,000 (9,072)	8,700 (3,946)	12,300 (5,579)	14,000 (6,350)
10' x 32' (3 x 10)	9	24,000 (10,886)	9,600 (4,355)	13,700 (6,214)	15,200 (6,895)
10' x 36' (3 x 11)	10	28,000 (12,701)	10,600 (4,808)	14,900 (6,759)	16,500 (7,484)
10' x 40' (3 x 12)	11	30,000 (13,608)	12,100 (5,489)	16,800 (7,620)	18,000 (8,165)
12' x 48' (4 x 15)	11	44,000 (19,958)	16,800 (7,620)	22,000 (9,979)	23,600 (10,705)

*One Chute to Fine Material Washer

** One Chute, Walkway and Ladders

***One Chute, Walkway and Stairs

STATIONARY CLASSIFIER - DOUBLE TANK					
Tank Size ft (m)	Stations	Estimated Tank Weight lbs (kg)	Estimated Support Structure Weight lbs (kg)*	Estimated Support Structure Weight lbs (kg)**	Estimated Support Structure Weight lbs (kg)***
10' x 32' (3 x 10)	9	48,900 (22,181)	22,500 (10,206)	28,800 (13,064)	30,300 (13,744)
10' x 36' (3 x 11)	10	53,000 (24,040)	24,000 (10,886)	31,100 (14,107)	32,700 (14,833)
10' x 40' (3 x 12)	11	56,000 (25,401)	26,000 (11,793)	34,000 (15,422)	35,200 (15,967)
12' x 48' (4 x 15)	11	86,000 (39,009)	38,000 (17,237)	46,900 (21,274)	48,200 (21,863)

*One Chute to Fine Material Washer

** One Chute, Walkway and Ladders

***One Chute, Walkway and Stairs

SEMI-PORTABLE CLASSIFIERS

WITH FINE MATERIAL WASHER FEATURES

- Two individual dewatering screws can produce two separate products or can be combined to produce the maximum amount of a primary product
- Flights are protected with adjustable 1" thick rubber wear shoes
- Extended shaft and slinger protects lower bearing from water leakage
- Plant prewired for easy start-up
- Flush-back nozzle enhances dewatering efficiency
- Adjustable weir plates
- Drain for easy clean out
- Skid-mounted modular design

WITH AGGRE-DRY DEWATERING WASHER FEATURES

- Dewatering screen
- Dual electric vibrators
- Urethane screen plates and liners



RETRACTABLE VALVE BRIDGE FOR TRAVEL



TWIN DEWATERING SCREWS



SLINGER PROTECTS LOWER BEARING



DUAL ELECTRIC VIBRATORS



URETHANE SCREENS AND LINERS



8% MOISTURE CONTENT

SEMI-PORTABLE CLASSIFIER SPECIFICATIONS

SEMI-PORTABLE CLASSIFIER WITH FINE MATERIAL WASHER - TRIPLE FLUME							
Tank Size ft (m)	Screw Size in x ft (mm x m)	Stations	Capacity TPH (MTPH)	Water Capacity - GPM (m ³ /sec)			Estimated Weight lbs (kg)
				100 Mesh	150 Mesh	200 Mesh	
8' x 24' (2 x 7)	Twin 36" x 25' (914 x 7)	7	200 (181)	2,800 (0.17)	1,400 (0.08)	N/A	40,000 (18,143)
8' x 28' (2 x 8)	Twin 36" x 25' (914 x 7)	8	200 (181)	3,200 (0.20)	1,600 (0.10)	N/A	42,000 (19,050)
8' x 32' (2 x 10)	Twin 36" x 25' (914 x 7)	9	200 (181)	3,500 (0.22)	1,800 (0.11)	N/A	48,500 (21,999)
10' x 24' (3 x 7)	Twin 36" x 25' (914 x 7)	7	200 (181)	3,500 (0.22)	1,800 (0.11)	N/A	50,000 (22,679)
10' x 28' (3 x 8)	Twin 36" x 25' (914 x 7)	8	200 (181)	4,100 (0.25)	2,100 (0.13)	N/A	51,000 (23,133)
10' x 32' (3 x 10)	Twin 36" x 25' (914 x 7)	9	200 (181)	4,700 (0.29)	2,400 (0.15)	1,250 (0.07)	51,500 (23,360)
10' x 36' (3 x 11)	Twin 36" x 25' (914 x 7)	10	200 (181)	5,300 (0.33)	2,700 (0.17)	1,400 (0.08)	58,500 (26,535)
10' x 40' (3 x 12)	Twin 36" x 25' (914 x 7)	11	200 (181)	5,900 (0.37)	3,000 (0.18)	1,500 (0.09)	63,000 (28,576)
8' x 32' (2 x 10)	Twin 44" x 32' (1,118 x 10)	9	350 (318)	3,500 (0.22)	1,800 (0.11)	950 (0.05)	60,000 (27,216)
10' x 32' (3 x 10)	Twin 44" x 32' (1,118 x 10)	9	350 (318)	4,700 (0.29)	2,400 (0.15)	1,250 (0.07)	64,500 (29,257)
10' x 36' (3 x 11)	Twin 44" x 32' (1,118 x 10)	10	350 (318)	5,300 (0.33)	2,700 (0.17)	1,400 (0.08)	67,000 (30,391)
10' x 40' (3 x 12)	Twin 44" x 32' (1,118 x 10)	11	350 (318)	5,900 (0.37)	3,000 (0.18)	1,500 (0.09)	68,000 (30,844)
10' x 40' (3 x 12)	Twin 54" x 35' (1,372 x 11)	11	480 (436)	5,900 (0.37)	3,000 (0.18)	1,500 (0.09)	97,000 (43,999)
10' x 40' (3 x 12)	Twin 66" x 35' (1,676 x 11)	11	720 (653)	5,900 (0.37)	3,000 (0.18)	1,500 (0.09)	132,000 (59,874)
12' x 48' (4 x 15)	Twin 44" x 32' (1,118 x 10)	11	350 (318)	8,100 (0.51)	4,200 (0.26)	2,150 (0.13)	91,000 (41,277)
12' x 48' (4 x 15)	Twin 54" x 35' (1,372 x 11)	11	480 (436)	8,100 (0.51)	4,200 (0.26)	2,150 (0.13)	116,000 (52,617)
12' x 48' (4 x 15)	Twin 66" x 35' (1,676 x 11)	11	720 (653)	8,100 (0.51)	4,200 (0.26)	2,150 (0.13)	150,000 (68,039)
12' x 48' (4 x 15)	Twin 72" x 35' (1,829 x 11)	11	820 (744)	8,100 (0.51)	4,200 (0.26)	2,150 (0.13)	175,000 (79,379)

SEMI-PORTABLE CLASSIFIERS SPECIFICATIONS (CONTINUED)

SEMI-PORTABLE CLASSIFIER WITH AGGREDRY® DEWATERING WASHER							
Tank Size ft (m)	Screw Diameter in (mm)	Stations	Capacity TPH (MTPH)	Water Capacity - GPM (m ³ /sec)			Estimated Weight lbs (kg)
				100 Mesh	150 Mesh	200 Mesh	
8' x 24' (2 x 7)	Twin 36" (914)	7	200 (181)	2,800 (0.17)	1,400 (0.08)	800 (0.05)	54,000 (24,494)
8' x 28' (2 x 9)	Twin 36" (914)	8	200 (181)	3,200 (0.20)	1,600 (0.10)	900 (0.05)	56,000 (25,401)
8' x 32' (2 x 10)	Twin 36" (914)	9	200 (181)	3,500 (0.22)	1,800 (0.11)	950 (0.05)	62,500 (28,350)
10' x 28' (3 x 9)	Twin 36" (914)	7	200 (181)	4,100 (0.25)	2,100 (0.13)	400 (0.02)	64,000 (29,030)
10' x 32' (3 x 10)	Twin 36" (914)	8	200 (181)	4,200 (0.26)	2,400 (0.15)	1,250 (0.07)	65,000 (29,483)
10' x 36' (3 x 11)	Twin 36" (914)	9	200 (181)	5,300 (0.33)	2,700 (0.17)	1,400 (0.08)	65,500 (29,710)
10' x 40' (3 x 12)	Twin 36" (914)	10	200 (181)	5,900 (0.37)	3,000 (0.18)	1,500 (0.09)	72,500 (32,885)
8' x 32' (2 x 10)	Twin 48" (1,219)	9	400 (363)	5,300 (0.33)	1,800 (0.11)	950 (0.05)	78,000 (35,380)
10' x 32' (3 x 10)	Twin 48" (1,219)	9	400 (363)	4,700 (0.29)	2,400 (0.15)	1,250 (0.07)	82,500 (37,421)
10' x 36' (3 x 11)	Twin 48" (1,219)	10	400 (363)	5,300 (0.33)	2,700 (0.17)	1,400 (0.08)	85,000 (38,555)
10' x 40' (3 x 12)	Twin 48" (1,219)	11	400 (363)	5,900 (0.37)	3,000 (0.18)	1,500 (0.09)	86,000 (39,009)
10' x 40' (3 x 12)	Twin 66" (1,676)	11	600 (544)	5,900 (0.37)	3,000 (0.18)	1,500 (0.09)	140,000 (63,503)
12' x 48' (4 x 15)	Twin 48" (1,219)	11	400 (363)	8,100 (0.51)	4,200 (0.26)	2,150 (0.13)	109,000 (49,442)
12' x 48' (4 x 15)	Twin 60" (1,524)	11	600 (544)	8,100 (0.51)	4,200 (0.26)	2,150 (0.13)	158,000 (71,668)

FULLY PORTABLE CLASSIFIER FEATURES AND SPECIFICATIONS

FEATURES

- Air brakes
- Running lights
- Hydraulic leveling jacks
- Fifth wheel hitch
- Prewired design for easy start-up



NOTE: Classifier must be removed for highway travel

QUICK SET-UP AND DISMANTLE

FULLY PORTABLE CLASSIFIER WITH FINE MATERIAL WASHER - TRIPLE FLUME								
Tank Size ft (m)	Screw Size inch (mm)	Stations	Capacity TPH (MTPH)	Water Capacity - GPM (m ³ /sec)			Estimated Weight lbs (kg)	Axles/Tires
				100 Mesh	150 Mesh	200 Mesh		
8' x 24' (2 x 7)	Twin 36" (914)*	7	200 (181)	2,800 (0.17)	1,400 (0.08)	800 (0.1)	64,000 (29,030)	2/8 or 3/12
8' x 28' (2 x 9)	Twin 36" (914)*	8	200 (181)	3,200 (0.20)	1,600 (0.10)	900 (0.05)	65,000 (29,484)	2/8 or 3/12
8' x 32' (2 x 10)	Twin 36" (914)*	9	200 (181)	3,500 (0.22)	1,800 (0.11)	950 (0.05)	52,000 (23,587)	2/8 or 3/12
8' x 32' (2 x 10)	Twin 36" (914)*	9	200 (181)	3,500 (0.22)	1,800 (0.11)	950 (0.05)	68,000 (30,844)	2/8 or 3/12
8' x 32' (2 x 10)	Twin 44" (1,118)*	9	350 (318)	3,500 (0.22)	1,800 (0.11)	950 (0.05)	73,500 (33,339)	3/12
10' x 28' (3 x 9)	Twin 44" x 32' (1,118 x 10)	8	350 (318)	4,100 (0.25)	2,100 (0.13)	1,100 (0.06)	81,000 (36,741)	3/12
10' x 32' (3 x 10)	Twin 44" x 32' (1,118 x 10)	9	350 (318)	4,700 (0.29)	2,400 (0.15)	1,250 (0.07)	86,000 (39,009)	3/12
10' x 36' (3 x 11)	Twin 44" x 32' (1,118 x 10)	10	350 (318)	5,300 (0.33)	2,700 (0.17)	1,400 (0.08)	88,000 (39,916)	3/12
10' x 40' (3 x 12)	Twin 44" x 32' (1,118 x 10)	11	350 (318)	5,900 (0.37)	3,000 (0.18)	1,500 (0.09)	95,000 (43,091)	3/12

*Screw length dependant of number of axles required therefore will be 25-ft, 28-ft or 30-ft

OPTIONS



RISING CURRENT PUMP

- WALKWAY TO ACCESS BLENDING FLUME
- UPPER WALKWAY
- LADDERS
- STAIRS



WALKWAY TO ACCESS BLENDING FLUME

- URETHANE LINED COLLECTION BLENDING FLUME
- A532 OR URETHANE WEAR SHOES
- METERING BIN CONTROLS
- METERING BINS



DISCHARGE CHUTE

- DISCHARGE CHUTE
- GUARDING
- RISING CURRENT PUMP

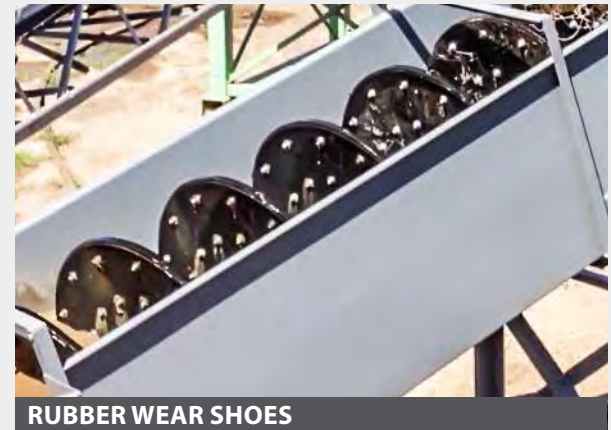
IN-STOCK PARTS



WEAR SLEEVE AND LOWER SEAL



VALVES



RUBBER WEAR SHOES

- INPUT OR OUTPUT MODULES
- BINDICATOR

- HYDRAULIC FILTER
- VALVES

- WEAR SHOES
- LOWER SEAL

- WEAR SLEEVE
- DRIVE COMPONENTS

- VIBRATOR GREASE



SUPERIOR

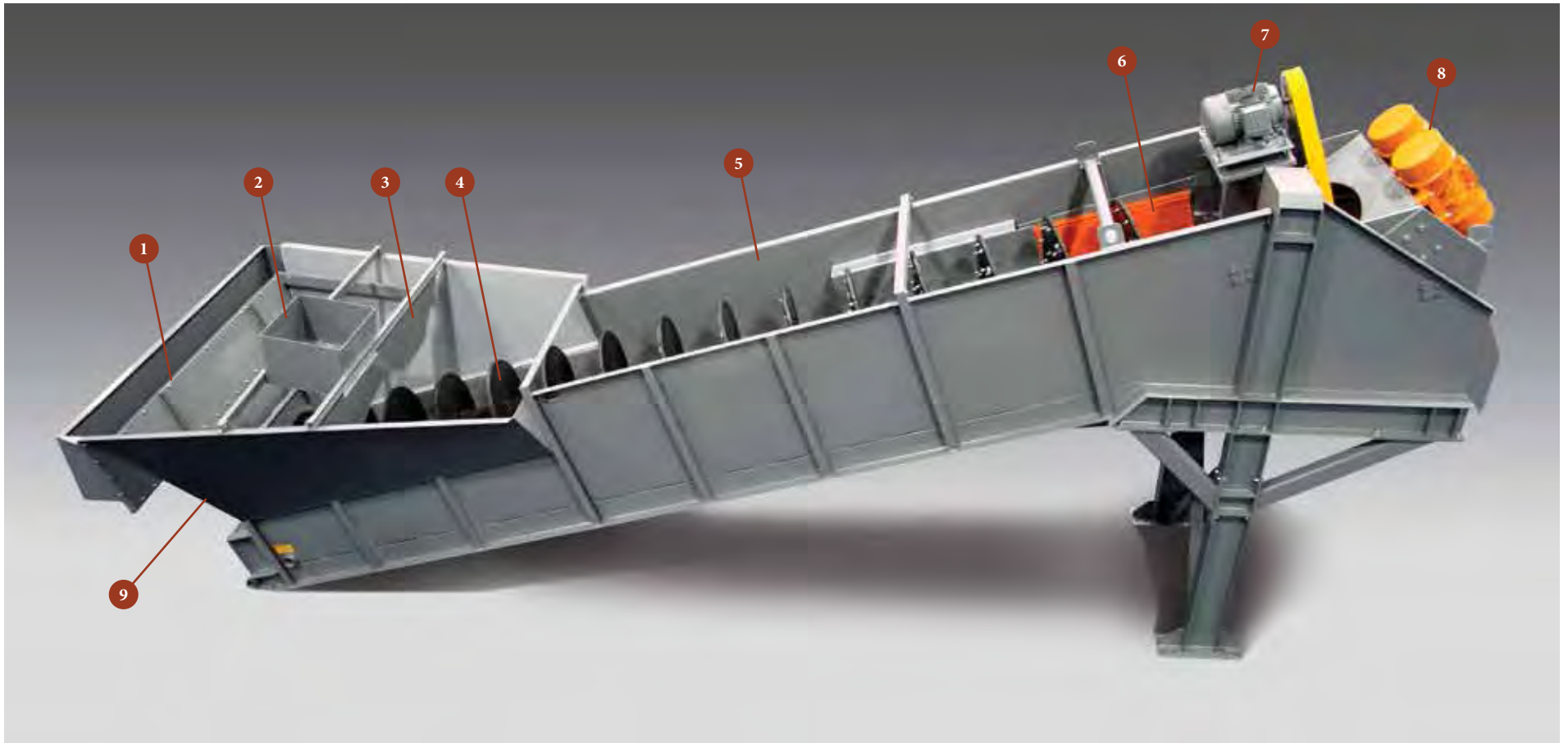


AGGREDRY[®] DEWATERING WASHER

Instantly Produce Saleable Sand

- Combination of a fine material washer and dewatering screen in **a single machine**.
- Processed material has 8% moisture, which requires no dry time and is **instantly saleable**.
- Patented fines recovery system returns fines to screw **saving 3% of material from waste pond**.
- **Dry material is gentler** on loader tires and doesn't stick to conveyor components.

HIGHLIGHTS



- 1/ **OVERFLOW WEIR:** Allows for leveling of water for maximum sand retention.
- 2/ **FEED BOX:** High-quality, abrasion-resistant liners reduce turbulence for increased yield.
- 3/ **BAFFLE:** Located in load zone to calm water for better retention of fines.
- 4/ **FINE MATERIAL SCREW:** Single or twin screws, protected with adjustable 1" thick rubber wear shoes. In sand applications, rubber has 10% longer wear life than other wear products.

- 5/ **WASH BASIN:** Allows initial drainage of silty water.
- 6/ **DEWATERING SCREEN:** Replaceable snap-deck urethane screens with bolt-on urethane liners.
- 7/ **DRIVE SYSTEM:** Electrical, 3-phase, 60Hz, 460V motor with shaft-mounted gear reducer, belts and guarding.
- 8/ **DUAL VIBRATORS:** Electric, linear motion with adjustable g-force.
- 9/ **LOWER BEARING:** Slinger plate protects lower bearing from water leakage. Standard, robust pillow block bearing design.

- 10/ **FINES RECOVERY SYSTEM:** Minus quarter millimeter sand collects in an under flume and is reintroduced back into the sand screw via this water jet. The patented technology saves up to 3% of material from waste pond.

VS. FINE MATERIAL SCREW



AGGREDRY WASHER ACHIEVES 8% MOISTURE

- MOISTURE CONTENT AS HIGH AS 25%
- EXTRA REAL ESTATE FOR DRYING STOCKPILES
- WET SAND IS DAMAGING TO TIRES AND COMPONENTS

VS. DEWATERING SCREEN



SAVE FINES FROM WASTE POND

- DEWATERING SCREEN LOSES UP TO 15% OF FINES TO WASTE POND
- AGGRE-DRY WASHER'S FINES RECOVERY SAVES 3% FROM POND
- CALCULATE THE ADDITIONAL PROFIT AT SUPERIOR-IND.COM/PRODUCTS/AGGRE-DRY

VS. HYDROCYCLONE



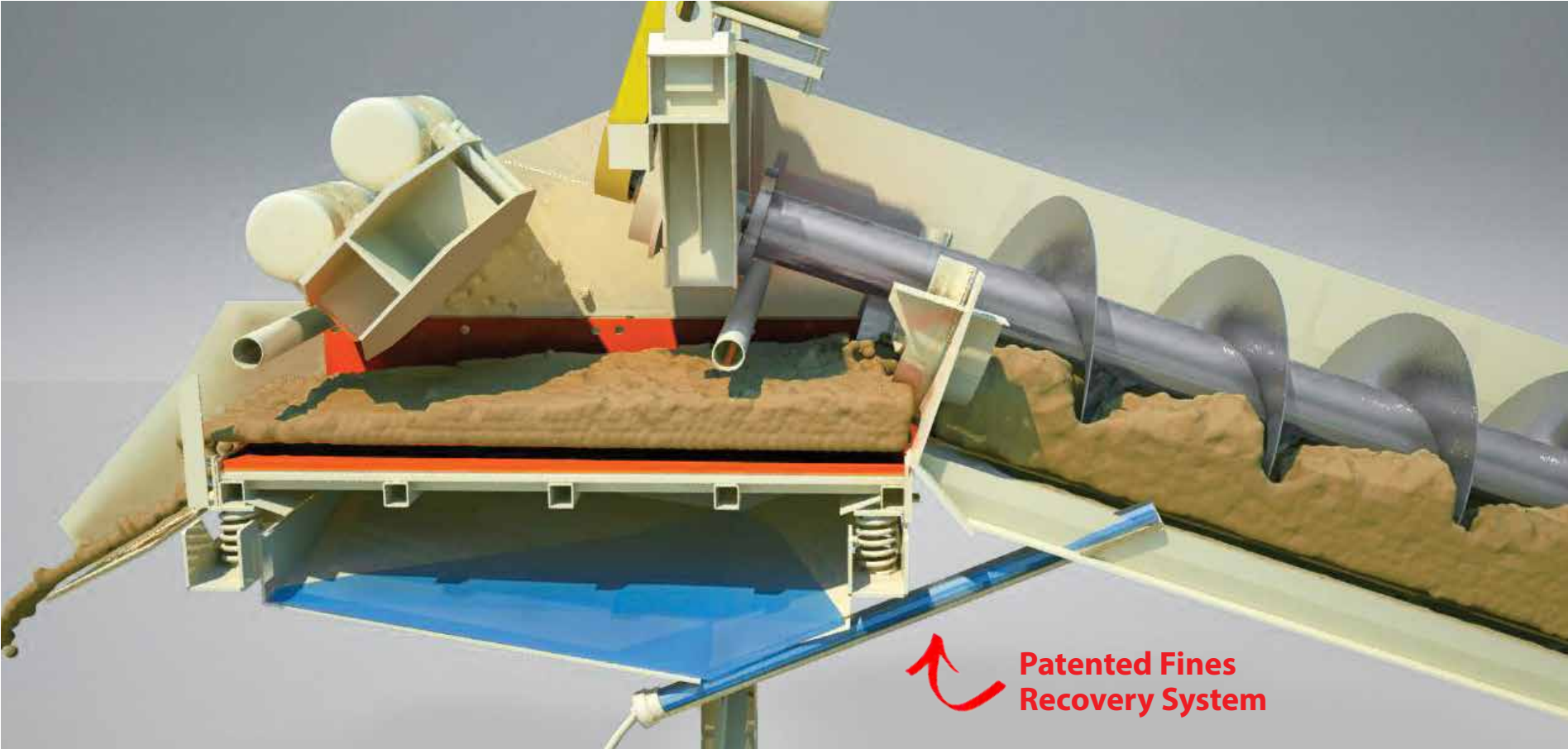
CUT OPERATING EXPENSES

- HYDROCYCLONES USE TWICE THE HORSEPOWER
- SAVE \$4,000 A YEAR IN ENERGY USE
- BASED ON 1,600 PRODUCTION HOURS/YEAR AND 0.071 KWH.



PHOTO GALLERY

FINES RECOVERY PROFIT CALCULATION



Input values matching your plants specific data to calculate additional annual profit from fines recovery.

	x	3%	=		x		x		=	
Tons Per Day of Wet Sand Production		Saved From Waste Pond		Additional Saleable Tons		Cost Per Ton		Production Days in a Year		Additional Annual Profit



If you would like to use our online calculator, visit www.superior-ind.com/products/aggre-dry



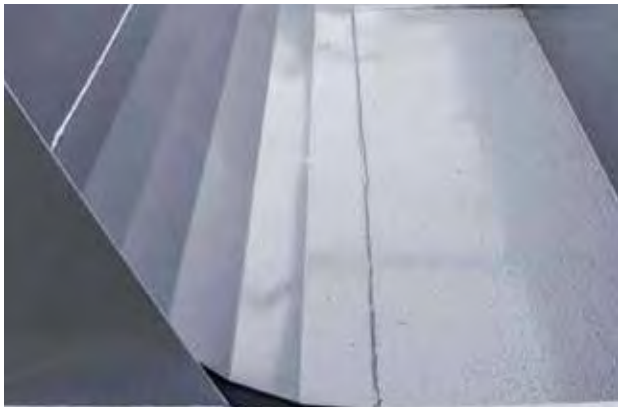
SINGLE SCREW



TWIN SCREW



LOAD ZONE BAFFLE SETTLES FINES



CURVED BELLY PAN



SLINGER PLATE PROTECTS LOWER BEARING



FLUSH-BACK NOZZLE



DUAL ELECTRIC VIBRATORS



SCREEN URETHANE SIDE WALLS



8% MOISTURE CONTENT

OPTIONS



DISCHARGE CHUTE

- DISCHARGE CHUTE
- HYDRAULIC DRIVE
- CLEAN-OUT DOORS FOR BELLY PAN



PROTECTIVE GUARDING

- A532 AND URETHANE WEAR SHOES
- GUARDING

IN-STOCK PARTS



SPECIAL GREASE FOR VIBRATORS

- STAINLESS STEEL WEAR SLEEVE
- HEAVY-DUTY RUBBER LOWER SEAL
- RUBBER WEAR SHOES
- VIBRATOR GREASE

SPECIFICATIONS

AGGREDRY® DEWATERING WASHER – SINGLE SCREW

Screw Size inch (mm)	Capacity TPH (MTPH)	Screw Speed RPM	Max. Material Size inch (mm)	Auger Motor Size HP (kw)	Vibrating Motor Size HP (kw)	Water Capacity - GPM (m³/sec)		
						100 Mesh	150 Mesh	200 Mesh
36" (914)	100 (90)	20	3/8" (0.9)	15 (11.0)	two 8.05 (6.0)	1,700 (0.10)	850 (0.05)	450 (0.02)
48" (1,219)	200 (181)	16	3/8" (0.9)	25 (19.0)	two 11.40 (8.5)	2,200 (0.13)	1,050 (0.06)	600 (0.03)
60" (1,524)	300 (272)	13	3/8" (0.9)	30 (22.0)	two 12.61 (9.5)	2,400 (0.15)	1,200 (0.07)	650 (0.04)

AGGREDRY® DEWATERING WASHER – TWIN SCREW

Screw Size inch (mm)	Capacity TPH (MTPH)	Screw Speed RPM	Max. Material Size inch (mm)	Auger Motor Size HP (kw)	Vibrating Motor Size HP (kw)	Water Capacity - GPM (m³/sec)		
						100 Mesh	150 Mesh	200 Mesh
48" (1,219)	400 (362)	16	3/8" (0.9)	two 25 (18.0)	four 17.2 (13.0)	3,700 (0.23)	1,800 (0.11)	975 (0.06)
60" (1,524)	600 (540)	16	3/8" (0.9)	two 30 (22.0)	four 17.2 (13.0)	4,000 (0.25)	2,000 (0.12)	1,200 (0.07)



FINE MATERIAL WASHER

Up to 1,110 TPH

- Industry's **largest range of sizes** allows us to match equipment to specific requirements. ■
- Market's only dewatering screw capable of handling **material as large as 3/4"**. ■
- Heavy-duty skid frame allows for **crane-free installation** into existing footprints. ■
- One machine** for dewatering, classifying and washing materials. ■

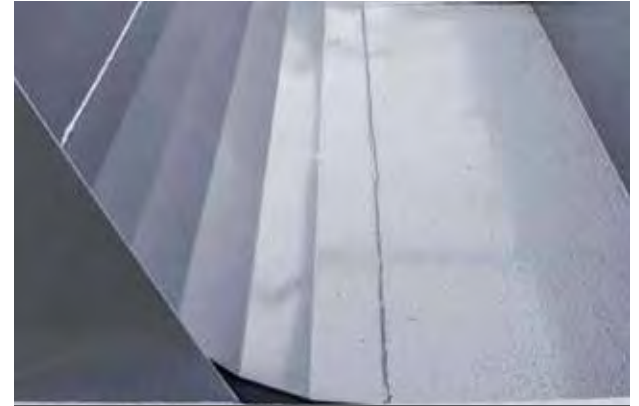
FEATURES



SINGLE OR TWIN SCREWS



SLINGER PROTECTS LOWER BEARING



CURVED BELLY PAN



GUARDED DRIVE SYSTEM



FLUSH-BACK NOZZLE



LOAD ZONE BAFFLE SETTLES FINES

DEWATERING SCREW

- Single or twin models
- Flights are protected with adjustable 1" thick rubber wear shoes
- Extended shaft and slinger protects lower bearing from water leakage

DRIVE SYSTEM

- Electrical 3-phase, 60Hz, 460V motor
- Off-the-shelf, shaft-mounted gear reducer
- Belt and guarding

WASH BASIN

- Flush-back nozzle promotes efficient dewatering by removing stagnant sand near discharge

- Adjustable weir plates level overflow water, maximizing retention of desirable fines
- Baffle, located behind load zone, calms water for better retention of fines
- Heavy-duty skid frame
- Lifting points
- Drain for easy clean out
- Support legs



DISCHARGE CHUTE

- DISCHARGE CHUTE
- HYDRAULIC DRIVE



A532 WEAR SHOES

- A532 WEAR SHOES
- URETHANE WEAR SHOES



PERSONAL SAFETY COVERS AND GUARDING

- PERSONAL SAFETY COVERS
- GUARDING
- FOLDING WING WALLS

IN-STOCK PARTS



WEAR SLEEVE AND LOWER SEAL

- STAINLESS STEEL WEAR SLEEVE
- HEAVY-DUTY RUBBER LOWER SEAL
- HEAVY WALLED STEEL PIPE SHAFTS



DRIVE COMPONENTS

- RUBBER WEAR SHOES
- A532 AND URETHANE WEAR SHOES
- BELLY PANS



RUBBER WEAR SHOES

- LOWER BEARING RETROFIT KITS FOR OTHER MANUFACTURERS' WASHERS
- ELECTRIC OR HYDRAULIC DRIVE COMPONENTS

SPECIFICATIONS

FINE MATERIAL WASHER – SINGLE SCREW

Screw Size in x ft (mm x m)	Capacity TPH (MTPH)	Peripheral Screw Speed FPM (MPS)	Screw Speed RPM	Motor Size HP (kw)	Water Capacity - GPM (m³/sec)			Discharge Chute Weight lbs (kg)	Estimated Empty Weight lbs (kg)
					100 Mesh	150 Mesh	200 Mesh		
12" x 14' (304 x 4)	20 (18)	120 (0.6)	40	3 (2.0)					
	15 (13)	90 (0.4)	30	3 (2.0)	150 (0.009)	100 (0.006)	50 (0.003)	80 (36)	3,000 (1,360)
	10 (9)	60 (0.3)	20	3 (2.0)					
	5 (4)	30 (0.1)	10						
24" x 24' (609 x 7)	50 (45)	200 (1.0)	32	7.5 (5.5)					
	38 (34)	150 (0.8)	24	5 (3.5)	500 (0.03)	225 (0.01)	125 (0.007)	120 (54)	6,500 (2,948)
	25 (22)	100 (0.5)	16	5 (3.5)					
30" x 24' (762 x 7)	75 (68)	200 (1.0)	25	15 (11.0)					
	60 (54)	150 (0.8)	19	10 (7.5)	575 (0.03)	275 (0.01)	160 (0.01)	140 (64)	8,300 (3,765)
	50 (45)	100 (0.5)	13	7.5 (5.5)					
36" x 25' (914 x 7)	100 (90)	200 (1.0)	20	15 (11.0)					
	75 (68)	150 (0.8)	15	10 (7.5)	700 (0.04)	330 (0.02)	180 (0.01)	150 (68)	10,600 (4,808)
	50 (45)	100 (0.5)	12	7.5 (5.5)					
44" x 32'* (1,118 x 10)	175 (159)	200 (1.0)	17	20 (15.0)					
	130 (118)	150 (0.8)	14	15 (11.0)	1,600 (0.10)	750 (0.04)	425 (0.02)	240 (109)	16,340 (7,412)
	85 (77)	100 (0.5)	9	10 (7.5)					
48" x 35' (1,219 x 11)	200 (181)	200 (1.0)	16	30 (22.0)					
	150 (136)	150 (0.8)	12	25 (18.5)	1,700 (0.10)	850 (0.05)	450 (0.02)	350 (159)	25,000 (11,340)
	100 (91)	100 (0.5)	8	20 (15.0)					
54" x 35' (1,372 x 11)	275 (249)	200 (1.0)	15	25 (18.5)					
	210 (191)	150 (0.8)	12	20 (15.0)	1,900 (0.11)	950 (0.05)	575 (0.03)	240 (109)	18,400 (8,346)
	140 (127)	100 (0.5)	8	15 (11.0)					
60" x 35' (1,524 x 11)	340 (308)	200 (1.0)	14	40 (29.5)					
	255 (231)	150 (0.8)	9	30 (22.0)	2,200 (0.13)	1,050 (0.06)	600 (0.03)	350 (159)	27,500 (12,474)
	170 (154)	100 (0.5)	7	25 (18.5)					
66" x 35' (1,676 x 11)	400 (363)	200 (1.0)	13	50 (37.0)					
	300 (272)	150 (0.8)	11	40 (29.5)	2,400 (0.15)	1,200 (0.07)	650 (0.04)	350 (159)	29,160 (13,227)
	200 (181)	100 (0.5)	7	30 (22.0)					
72" x 38' (1,829 x 12)	475 (431)	235 (1.2)	13	60 (44.0)					
	360 (327)	180 (0.9)	10	50 (37.0)	2,600 (0.16)	1,300 (0.08)	700 (0.04)	450 (204)	31,880 (14,461)
	240 (218)	126 (0.6)	7	40 (29.5)					
84" x 38' (2,134 x 12)	600 (544)	260 (1.3)	11	75 (55.0)					
	450 (408)	160 (0.8)	8	60 (44.0)	3,100 (0.19)	1,600 (0.10)	850 (0.05)	550 (227)	43,000 (19,504)
	300 (272)	110 (0.6)	5	50 (37.0)					

*Optional hinged folding wing walls allow for quick transition from transport to operation modes.

SPECIFICATIONS

FINE MATERIAL WASHER – TWIN SCREW									
Screw Size in x ft (mm x m)	Capacity TPH (MTPH)	Peripheral Screw Speed FPM (MPS)	Screw Speed RPM	Motor Size HP (kw)	Water Capacity - GPM (m ³ /sec)			Discharge Chute Weight lbs (kg)	Estimated Empty Weight lbs (kg)
					100 Mesh	150 Mesh	200 Mesh		
24" x 24' (609 x 7)	100 (90)	200 (1.0)	32	(2) 7.5 (5.5)	890 (0.05)	420 (0.02)	235 (0.01)	240 (109)	14,800 (6,713)
	75 (68)	150 (0.8)	24	(2) 5 (3.5)					
	50 (45)	100 (0.5)	16	(2) 5 (3.5)					
30" x 24' (762 x 7)	150 (136)	200 (1.0)	25	(2) 15 (11.0)	1,000 (0.06)	490 (0.03)	280 (0.02)	270 (122)	15,700 (7,121)
	120 (108)	150 (0.8)	19	(2) 10 (7.5)					
	100 (91)	100 (0.5)	13	(2) 7.5 (5.5)					
36" x 25' (914 x 7)	200 (181)	200 (1.0)	20	(2) 15 (11.0)	1,250 (0.07)	620 (0.04)	340 (0.02)	280 (127)	17,000 (7,711)
	150 (136)	150 (0.8)	15	(2) 10 (7.5)					
	100 (91)	100 (0.5)	10	(2) 7.5 (5.5)					
44" x 32' * (1,118 x 10)	350 (318)	200 (1.0)	17	(2) 20 (15.0)	2,800 (0.17)	1,400 (0.08)	675 (0.04)	350 (159)	30,000 (13,608)
	260 (236)	150 (0.8)	14	(2) 15 (11.0)					
	170 (154)	100 (0.5)	9	(2) 10 (7.5)					
48" x 35' (1,219 x 11)	400 (363)	200 (1.0)	16	(2) 25 (18.5)	3,000 (0.18)	1,450 (0.09)	750 (0.04)	380 (172)	40,000 (18,144)
	300 (272)	150 (0.8)	12	(2) 20 (15.0)					
	200 (181)	100 (0.5)	8	(2) 15 (11.0)					
54" x 35' (1,372 x 11)	550 (499)	200 (1.0)	15	(2) 30 (22.0)	3,500 (0.22)	1,750 (0.11)	950 (0.05)	480 (218)	48,000 (21,772)
	420 (381)	150 (0.8)	12	(2) 25 (18.5)					
	280 (254)	100 (0.5)	8	(2) 15 (11.0)					
60" x 35' (1,524 x 11)	680 (617)	200 (1.0)	14	(2) 40 (29.5)	3,700 (0.23)	1,800 (0.11)	975 (0.06)	580 (263)	60,000 (27,216)
	510 (463)	150 (0.8)	9	(2) 30 (22.0)					
	340 (308)	100 (0.5)	7	(2) 25 (18.5)					
66" x 35' (1,676 x 11)	800 (726)	200 (1.0)	13	(2) 50 (37.0)	4,000 (0.25)	2,000 (0.12)	1,200 (0.07)	650 (295)	62,000 (28,123)
	600 (544)	150 (0.8)	11	(2) 40 (29.5)					
	400 (363)	100 (0.5)	7	(2) 30 (22.0)					
72" x 38' (1,829 x 12)	950 (862)	235 (1.2)	13	(2) 60 (44.0)	4,500 (0.28)	2,200 (0.13)	1,250 (0.07)	750 (340)	64,500 (29,257)
	710 (644)	180 (0.9)	10	(2) 50 (37.0)					
	475 (431)	126 (0.6)	7	(2) 40 (29.5)					
84" x 38' (2,134 x 12)	1,100 (998)	224 (1.1)	12	(2) 75 (55.0)	4,800 (0.30)	2,500 (0.15)	1,350 (0.08)	850 (386)	70,500 (31,978)
	825 (748)	180 (0.9)	9	(2) 60 (44.0)					
	550 (499)	120 (0.6)	6	(2) 50 (37.0)					

*Optional hinged folding wing walls allow for quick transition from transport to operation modes.

PHOTO GALLERY





COARSE MATERIAL WASHER

Up to 550 TPH

- Adjustable screw shaft design allows producers to **process a wider range of material** sizes. ■
- Heavy-duty angle iron skid frame is **stronger than formed plate** designs and installs without expensive cranes. ■
- Broadest group of product designs in the industry for **very application-specific** offerings. ■
- Motors, drive parts and pillow block bearings are **standard, off-the-shelf components** for easy replacement. ■

FEATURES



A532 WEAR SHOES AND PADDLES



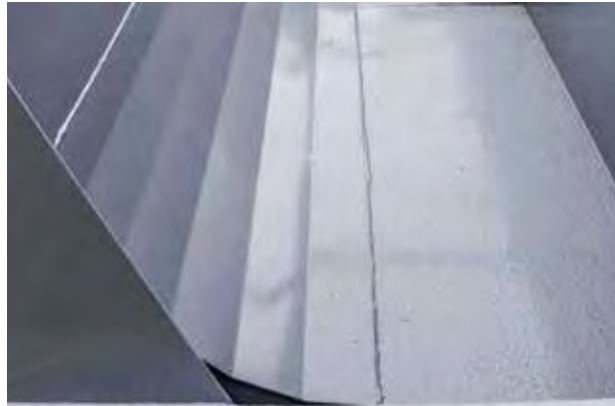
ADJUSTABLE OVERFLOW GATE



SLINGER PROTECTS LOWER BEARING



GEAR REDUCER



CURVED BELLY PAN



FLUSH-BACK NOZZLE

WASHING SCREW

- Single or twin models
- Combination of flights and paddles dependent on scrubbing requirements
- Flights and paddle bases are protected with replaceable A532 wear shoes and paddles
- Extended shaft and slinger protects lower bearing from water leakage

DRIVE SYSTEM

- Electrical 3-phase, 60Hz, 460V motor; can also be configured to match local power requirements, if necessary
- Shaft-mounted gear reducer
- Belt and guarding

WASH BASIN

- Flush-back nozzle enhances dewatering efficiency
- Adjustable overflow gates
- Heavy-duty skid frame
- Lifting points
- Drain for easy clean out
- Support legs for 15°



DISCHARGE CHUTE

- DISCHARGE CHUTE
- HYDRAULIC DRIVE



PROTECTIVE GUARDING

- PERSONAL SAFETY COVERS
- GUARDING



BOLT ON PADDLES INCREASE SCRUBBING

- URETHANE WEAR SHOES
- BOLT ON PADDLES

IN-STOCK PARTS



WEAR SLEEVE AND LOWER SEAL

- STAINLESS STEEL WEAR SLEEVE
- HEAVY-DUTY RUBBER LOWER SEAL
- RUBBER WEAR SHOES



MOTORS

- HEAVY WALLED STEEL PIPE SHAFTS
- BEARINGS
- BELLY PANS



SHAFT AND WEAR SHOES

- LOWER BEARING RETROFIT KITS FOR OTHER MANUFACTURERS' WASHERS
- ELECTRIC OR HYDRAULIC DRIVE COMPONENTS

SPECIFICATIONS

COARSE MATERIAL WASHER - SINGLE SCREW

Screw Size in x ft (mm x m)	Estimated Capacity TPH (MTPH)	Screw Speed RPM	Motor Size HP (kw)	Max. Material Size inch (mm)	Estimated Empty Weight lbs (kg)	Discharge Chutes Weight lbs (kg)
24" x 18' (610 x 5)	60 - 75 (50 - 60)	40	15 (11.0)	1.5" (40)	8,000 (3,600)	120 (50)
30" x 18' (760 x 5)	100 - 125 (90 - 110)	35	20 (15.0)	2.0" (50)	9,000 (4,000)	140 (60)
30" x 24' (760 x 7)	100 - 125 (90 - 110)	35	25 (18.5)	2.0" (50)	10,700 (4,800)	140 (60)
36" x 18' (915 x 5)	150 - 175 (135 - 160)	30	25 (18.5)	3.0" (75)	11,300 (5,100)	150 (70)
36" x 28' (915 x 10)	150 - 175 (135 - 160)	30	30 (22.0)	3.0" (75)	14,400 (6,500)	150 (70)
44" x 20' (1,100 x 6)	200 - 250 (180 - 230)	26	30 (22.0)	3.0" (75)	15,000 (6,700)	240 (100)
44" x 32' (1,100 x 10)	200 - 250 (180 - 230)	26	50 (37.0)	3.0" (75)	19,100 (8,700)	240 (100)
48" x 24' (1,200 x 7)	220 - 275 (200 - 250)	24	40 (29.5)	3.5" (90)	21,500 (9,800)	280 (130)
48" x 32' (1,200 x 10)	220 - 275 (200 - 250)	24	50 (37.0)	3.5" (90)	25,500 (11,600)	280 (130)

COARSE MATERIAL WASHER - TWIN SCREW

Screw Size in x ft (mm x m)	Estimated Capacity TPH (MTPH)	Screw Speed RPM	Motor Size HP (kw)	Max. Material Size inch (mm)	Estimated Empty Weight lbs (kg)	Discharge Chutes Weight lbs (kg)
30" x 18' (760 x 5)	200 - 250 (180 - 230)	35	(2) 20 (15.0)	1.5" (40)	13,700 (6,200)	280 (130)
30" x 24' (760 x 7)	200 - 250 (180 - 230)	35	(2) 25 (18.5)	2.0" (50)	19,300 (8,700)	280 (130)
36" x 18' (915 x 5)	250 - 300 (230 - 270)	30	(2) 25 (18.5)	3.0" (75)	16,800 (7,600)	280 (130)
36" x 28' (915 x 10)	250 - 300 (230 - 270)	30	(2) 30 (22.0)	3.0" (75)	23,000 (10,500)	280 (130)
44" x 20' (1,100 x 6)	450 - 500 (400 - 450)	26	(2) 30 (22.0)	3.0" (75)	28,400 (12,900)	350 (160)
44" x 32' (1,100 x 10)	450 - 500 (400 - 450)	26	(2) 50 (37.0)	3.0" (75)	36,600 (16,600)	350 (160)
48" x 24' (1,200 x 7)	450 - 550 (400 - 500)	24	(2) 40 (29.5)	3.5" (90)	39,600 (18,000)	450 (200)
48" x 32' (1,200 x 10)	450 - 550 (400 - 500)	24	(2) 50 (37.0)	3.5" (90)	42,500 (19,300)	450 (200)



DEWATERING SCREEN

Up to 300 TPH

- Achieve **moisture content as low as 8%** for a saleable product in less than a day. ■
- Deeper bed depth allows screens to remove more moisture and retain **highest percentage of saleable product**. ■
- Aggressive throw allows for higher feed tonnage and **faster drying cycles**. ■
- Urethane screen sidewalls allow for additional **dewatering along the sides** of the bed. ■

FEATURES



SCREEN URETHANE SIDE WALLS



DUAL ELECTRICAL VIBRATORS



WATER DISCHARGE



RECYCLE WATER LINE



STEEL COMPRESSION SPRINGS



8% MOISTURE CONTENT

DRIVE

- Electric vibrators (adjustable counterweights)
- Adjustable high g-forces
- Unbalanced motors
- Centrifugal force

SCREEN DECK

- Bed angle: -5° to +5°
- Replaceable snap-deck urethane screens
- Bolt-on urethane screen liners

STANDARD

- Steel compression springs
- 1" steel motor mount
- Rigid 1/2" A36 steel welded frame
- Stationary frame
- Side liners with screen openings allows for larger surface for drainage



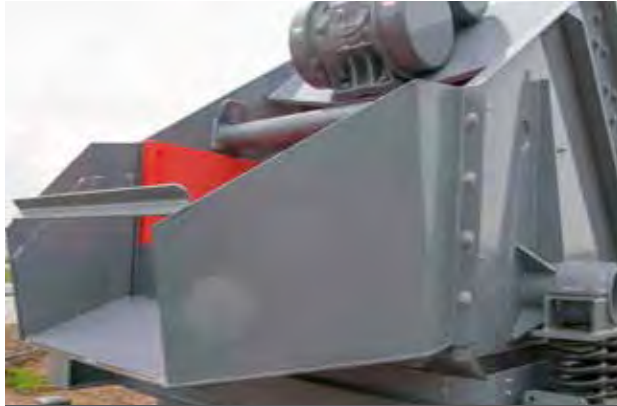
PORTABLE PACKAGING

- DISCHARGE CHUTE
- SPRAY BARS



SPRAY NOZZLE FOR DISCHARGE CLEANOUT

- SUPPORT LEGS
- FEED BOX LINING



DISCHARGE CHUTE

- PORTABLE PACKAGE: TIRES, HITCH, LANDING GEAR AND BREAKAWAY

IN-STOCK PARTS



SCREEN PLATES AND LINERS

- VIBRATOR GREASE
- SCREEN PLATES



COMPRESSION SPRINGS

- SCREEN LINERS
- SPRAY BARS



SPECIAL GREASE FOR VIBRATORS

- COMPRESSION SPRINGS

SPECIFICATIONS

DEWATERING SCREEN				
Dewatering Screen	Screen Size in x ft (mm x m)	Capacity TPH (MTPH)	Motor Size HP (kw)	Weight lbs (kg)
DS-488	48" x 8' (1,220 x 2.4)	100 (90.0)	two 8.05 (6.0)	4,500 (2,041)
DS-6010	60" x 10' (1,525 x 3.0)	200 (180.0)	two 11.40 (8.5)	6,500 (2,948)
DS-7212	72" x 12' (1,828 x 3.6)	300 (270.0)	two 12.61 (9.5)	9,500 (4,309)

PHOTO GALLERY





BLADE MILL WASHER

Up to 720 TPH

- Long and short tub lengths allows for additional scrubbing and **more effective conditioning** of clay and conglomerates. ■
- Bolt-on, heavy-duty A532 shoes can be adjusted for **years of additional service life**. ■
- Motors, drive parts and pillow block bearings are **standard, off-the-shelf components** for easy replacement. ■
- Increases screening efficiency** by up to 15%. ■

FEATURES



A532 PADDLES



ADJUSTABLE OVERFLOW GATE



HEAVY-DUTY FRAME W/LIFT POINTS



SLINGER PROTECTS LOWER BEARING



EASY ACCESS TO DRAIN AND FILL



GUARDED DRIVE SYSTEM

DEWATERING SCREW

- Single or twin models
- Heavy-duty paddle design for maximum scrubbing
- Flights and paddle bases are protected with adjustable A532 wear shoes and paddles
- Extended shaft and slinger protects lower bearing from water leakage

DRIVE SYSTEM

- Electrical 3-phase, 60Hz, 460V motor; can also be configured to match local power requirements, if necessary
- Shaft-mounted gear reducer
- Belt and guarding

WASH BASIN

- Adjustable overflow gates
- Heavy-duty skid frame
- Lifting points
- Drain for easy clean out



OVERFLOW TROUGH

- DISCHARGE CHUTE
- OVERFLOW TROUGH



ADJUSTABLE SUPPORT LEGS

- DISCHARGE SCREEN
- HYDRAULIC DRIVE



PROTECTIVE GUARDING

- CLEAN-OUT DOORS FOR BELLY PAN
- SUPPORT LEGS FROM 2°-10°

- ADJUSTABLE SUPPORT LEGS
- GUARDING

IN-STOCK PARTS



WEAR SLEEVE AND LOWER SEAL

- STAINLESS STEEL WEAR SLEEVE
- HEAVY-DUTY RUBBER LOWER SEAL
- HEAVY-WALLED STEEL PIPE SHAFTS



DRIVE COMPONENTS

- RUBBER WEAR SHOES
- PADDLES
- BELLY PANS



A532 PADDLES AND WEAR SHOES

- ELECTRIC OR HYDRAULIC DRIVE COMPONENTS

- LOWER BEARING RETROFIT KITS FOR OTHER MANUFACTURERS' WASHERS

SPECIFICATIONS

BLADE MILL - SINGLE SHAFT

Screw Size in x ft (mm x m)	Estimated Capacity TPH (MTPH)	Operating Angle degrees	Screw Speed RPM	Motor Size HP (kw)	Max. Material Size inch (mm)	Estimated Empty Weight lbs (kg)
24" x 18' (610 x 5)	60 - 110 (55 - 100)	0° - 8°	35	15 (11.0)	1.5" (40)	7,000 (3,200)
24" x 24' (610 x 5)	60 - 110 (55 - 100)	0° - 8°	35	20 (15.0)	1.5" (40)	7,800 (3,500)
30" x 18' (760 x 5)	100 - 165 (90 - 150)	0° - 8°	30	20 (15.0)	2.0" (50)	9,500 (4,300)
30" x 24' (760 x 5)	100 - 165 (90 - 150)	0° - 8°	30	25 (18.5)	2.0" (50)	10,600 (4,800)
36" x 18' (915 x 5)	150 - 250 (135 - 225)	0° - 8°	30	25 (18.5)	3.0" (75)	11,000 (5,000)
36" x 28' (915 x 10)	150 - 250 (135 - 225)	0° - 8°	30	30 (22.0)	3.0" (75)	14,000 (6,400)
44" x 20' (1,120 x 5)	200 - 335 (180 - 300)	0° - 8°	26	30 (22.0)	3.5" (90)	15,000 (6,800)
44" x 32' (1,120 x 10)	200 - 335 (180 - 300)	0° - 8°	26	50 (37.0)	3.5" (90)	19,500 (8,800)
48" x 24' (1,220 x 5)	220 - 360 (200 - 325)	0° - 8°	24	50 (37.0)	3.5" (90)	21,500 (9,800)

BLADE MILL - TWIN SHAFT

Screw Size in x ft (mm x m)	Estimated Capacity TPH (MTPH)	Operating Angle degrees	Screw Speed RPM	Motor Size HP (kw)	Max. Material Size inch (mm)	Estimated Empty Weight lbs (kg)
30" x 18' (760 x 5)	120 - 220 (110 - 200)	0° - 8°	30	(2) 25 (18.5)	2.0" (50)	14,000 (6,400)
30" x 24' (760 x 5)	120 - 220 (110 - 200)	0° - 8°	30	(2) 20 (15.0)	2.0" (50)	19,300 (8,800)
36" x 18' (915 x 5)	200 - 330 (180 - 300)	0° - 8°	30	(2) 25 (18.5)	3.0" (75)	17,000 (7,700)
36" x 28' (915 x 10)	200 - 330 (180 - 300)	0° - 8°	30	(2) 30 (22.0)	3.0" (75)	23,100 (10,500)
44" x 20' (1,120 x 5)	400 - 670 (360 - 610)	0° - 8°	26	(2) 30 (22.0)	3.5" (90)	28,000 (12,700)
44" x 32' (1,120 x 10)	400 - 670 (360 - 610)	0° - 8°	26	(2) 50 (37.0)	3.5" (90)	36,700 (16,650)
48" x 24' (1,220 x 5)	440 - 720 (400 - 650)	0° - 8°	24	(2) 50 (37.0)	3.5" (90)	45,000 (20,400)



LOG WASHERS

Up to 190 TPH

- Integrity of shafts and drivetrain enhanced by a rigid, **heavy-duty skid frame**. ■
- Spiral paddle design **reduces impact loading on paddles** and increases throughput. ■
- Bottom clean-out doors allow for **convenient maintenance** versus digging out material by hand. ■
- Motor, drive parts and pillow block bearings are **standard, off-the-shelf components** for easy replacement. ■

FEATURES



A532 PADDLES



ADJUSTABLE OVERFLOW GATE



SLINGER PROTECTS LOWER BEARING



EASY ACCESS TO DRAIN AND FILL



SPIRAL PADDLES FOR CONTINUOUS AGITATION



GUARDED DRIVE SYSTEM

LOG SHAFT

- Twin shafts with paddles
- Paddle bases are protected with adjustable A532 wear paddles
- Extended shaft and slinger protects lower bearing from water leakage

DRIVE SYSTEM

- Electrical 3-phase, 60Hz, 460V motor
- Gear reducer
- Belt and guarding

WASH BASIN

- Adjustable overflow gates
- Heavy-duty skid frame
- Lifting points
- Drain for easy clean out



CLEAN OUT DOORS FOR BELLY PAN



OVERFLOW TROUGH



PROTECTIVE GUARDING

- DISCHARGE CHUTE
- OVERFLOW TROUGH
- HYDRAULIC DRIVE
- CLEAN OUT DOORS FOR BELLY PAN
- SUPPORT LEGS FROM 2°-10°
- ADJUSTABLE SUPPORT LEGS
- PERSONAL SAFETY COVERS
- GUARDING

IN-STOCK PARTS



WEAR SLEEVE AND LOWER SEAL



BELLY PAN



A532 PADDLES AND WEAR SHOES

- STAINLESS STEEL WEAR SLEEVE
- HEAVY-DUTY RUBBER LOWER SEAL
- HEAVY-WALLED STEEL PIPE SHAFTS
- RUBBER WEAR SHOES
- PADDLES
- BELLY PANS
- ELECTRIC OR HYDRAULIC DRIVE COMPONENTS
- LOWER BEARING RETROFIT KITS FOR OTHER MANUFACTURERS' WASHERS

SPECIFICATIONS

LOG WASHER						
Screw Size in x ft (mm x m)	Screw Diameter inch (mm)	Max. Material Size inch (mm)	Speed RPM	Motor Size HP (kw)	Capacity TPH (MTPH)	Estimated Empty Weight lbs (kg)
24" x 20' (610 x 6)	24" (610)	2" (51)	40	40 (29.5)	30 - 60 (26 - 53)	30,000 (13,608)
36" x 25' (914 x 8)	36" (914)	3" (76)	33	75 (55.0)	50 - 125 (44 - 111)	33,500 (15,195)
36" x 30' (914 x 9)	36" (914)	3" (76)	33	100 (73.5)	50 - 125 (44 - 111)	38,500 (17,463)
36" x 35' (914 x 11)	36" (914)	3" (76)	33	150 (110.5)	50 - 125 (44 - 111)	48,000 (21,772)
38" x 30' (965 x 9)	38" (965)	2.5" (64)	33	150 (110.5)	60 - 140 (53 - 125)	41,000 (18,597)
38" x 35' (965 x 11)	38" (965)	2.5" (64)	33	150 (110.5)	60 - 140 (53 - 125)	49,000 (22,226)
44" x 25' (1,118 x 8)	44" (1,118)	4" (102)	26	125 (92.0)	75 - 175 (67 - 156)	53,500 (24,267)
44" x 30' (1,118 x 9)	44" (1,118)	4" (102)	26	150 (110.5)	75 - 175 (67 - 156)	57,000 (25,855)
44" x 35' (1,118 x 11)	44" (1,118)	4" (102)	26	200 (147.0)	75 - 175 (67 - 156)	71,000 (32,205)
46" x 30' (1,168 x 9)	46" (1,168)	3.5" (89)	24	200 (147.0)	100 - 190 (90 - 170)	61,000 (27,669)
46" x 35' (1,168 x 11)	46" (1,168)	3.5" (89)	24	200 (147.0)	100 - 190 (90 - 170)	74,000 (33,566)

PHOTO GALLERY



The logo for Superior Industries, featuring the word "SUPERIOR" in a bold, white, sans-serif font inside a black oval with a red border.

AGGRE-WASHER™ PORTABLE PLANT

Washing and Screening

- Simply fold the feed hopper and remove blocking for a **quick transition from operation to transport** mode. ■
- Large, water system equipped feed hopper ensures **maximum production to the screen**. ■
- Spray bars on each deck ensure **maximum material washing**. ■
- Flexible to design and manufacture** units for custom performance. ■

FEATURES



PORTABLE WASH PLANT



SEMI-PORTABLE WASH PLANT

FINE MATERIAL WASHER

- Single or twin models
- Flights are protected with adjustable 1" thick rubber wear shoes
- Extended shaft and slinger protects lower bearing from water leakage

PROCESSING SCREEN

- Customer screen brand preference
- Drive motor
- Screen subframe

SCREEN DISCHARGE CHUTE

- AR plate steel liners
- Maintenance-free service life
- Discharge directly onto conveyor

SPRAY BARS

- Installed on each deck for maximum washing
- Valve regulated water flow rate

WORK PLATFORM

- Large, safe area to change screen cloth, adjust spray bars and monitor operation

WIRED FOR IMMEDIATE PRODUCTION

- Simply plug into electrical source and switch on

WASH BASIN

- Minimal clearance between belly pan and screw shaft to accommodate smaller size aggregate
- Flush-back nozzle promotes efficient dewatering by removing stagnant sand near discharge
- Baffle, located behind load zone, calms water for better retention of fines
- Drain for easy clean out



SINGLE OR TWIN SHAFT



CURVED BELLY PAN



AR LINED STEEL CHUTE

- SINGLE OR TWIN SCREW CLASSIFIERS
- HORIZONTAL OR INCLINE SCREENS
- 24" - 30" REVERSIBLE CROSS CONVEYOR
- VALVE REGULATED WATER FLOW RATE



TRIPLE AXLES ON 16' AND LARGER

- TRIPLE AXLE ASSEMBLY
- OVERSIZE MATERIAL BLENDING GATE
- URETHANE OR A532 WEAR SHOES
- HYDRAULIC LEVELING JACKS



ROBUST, LONG-LASTING CONSTRUCTION

- ROLLAWAY DISCHARGE CHUTES
- 30 AMP MALE PIN AND SLEEVE PLUGS
- ADDITIONAL NO. 2 STARTER/START-STOP SWITCH
- OFF PLANT CONVEYORS

IN-STOCK PARTS



WEAR SLEEVE AND LOWER SEAL

- STAINLESS STEEL WEAR SLEEVE
- HEAVY-DUTY RUBBER LOWER SEAL
- HEAVY-WALLED STEEL PIPE SHAFTS



DRIVE COMPONENTS

- RUBBER WEAR SHOES
- A532 AND URETHANE WEAR SHOES
- BELLY PANS



RUBBER WEAR SHOES

- LOWER BEARING RETROFIT KITS FOR OTHER MANUFACTURERS' WASHERS
- ELECTRIC OR HYDRAULIC DRIVE COMPONENTS

SPECIFICATIONS

AGGRE-WASHER™ PORTABLE PLANT – SINGLE SCREW

Screw Size in x ft (mm x m)	Capacity TPH (MTPH)	Peripheral Screw Speed FPM (MPS)	Speed RPM	Max. Material Size inch (mm)	Motor Size HP (kw)	Water Capacity - GPM (m³/sec)		
						100 Mesh	150 Mesh	200 Mesh
36" x 25' (914 x 7)	100 (90)	100 (0.5)	20	3/8" (9.5)	15 (11.0)	700 (0.04)	330 (0.02)	650 (0.04)
	75 (68)	75 (0.3)	15		10 (7.5)			
	50 (45)	50 (0.2)	10		7.5 (5.5)			
36" x 28' (914 x 8)	100 (90)	100 (0.5)	20	3/8" (9.5)	15 (11.0)	700 (0.04)	330 (0.02)	150 (0.01)
	75 (68)	75 (0.3)	15		10 (7.5)			
	50 (45)	50 (0.2)	10		7.5 (5.5)			
44" x 32' (1,117 x 9)	175 (159)	100 (0.5)	17	3/8" (9.5)	20 (15.0)	1,600 (0.10)	750 (0.04)	425 (0.02)
	130 (118)	75 (0.3)	14		15 (11.0)			
	85 (77)	50 (0.2)	10		10 (7.5)			
48" x 32' (1,219 x 9)	200 (181)	100 (0.5)	16	3/8" (9.5)	25 (18.5)	1,700 (0.10)	850 (0.05)	450 (0.02)
	150 (136)	75 (0.3)	12		20 (15.0)			
	100 (90)	50 (0.2)	8		15 (11.0)			
54" x 35' (1,371 x 10)	275 (249)	100 (0.5)	16	3/8" (9.5)	30 (22.0)	1,800 (0.11)	950 (0.05)	525 (0.03)
	210 (190)	75 (0.3)	12		25 (18.5)			
	140 (127)	50 (0.2)	8		20 (15.0)			

AGGRE-WASHER™ PORTABLE PLANT – TWIN SCREW

Screw Size in x ft (mm x m)	Capacity TPH (MTPH)	Peripheral Screw Speed FPM (MPS)	Speed RPM	Max. Material Size inch (mm)	Motor Size HP (MT)	Water Capacity - GPM (m³/sec)		
						100 Mesh	150 Mesh	200 Mesh
36" x 25' (914 x 7)	200 (181)	100 (0.5)	20	3/8" (9.5)	(2) 15 (11.0)	1,250 (0.07)	620 (0.03)	340 (0.02)
	150 (136)	75 (0.3)	15		(2) 10 (7.5)			
	100 (90)	50 (0.2)	10		(2) 7.5 (5.5)			
36" x 28' (914 x 8)	200 (181)	100 (0.5)	20	3/8" (9.5)	(2) 15 (11.0)	1,250 (0.07)	620 (0.03)	340 (0.02)
	150 (136)	75 (0.3)	15		(2) 10 (7.5)			
	100 (90)	50 (0.2)	10		(2) 7.5 (5.5)			
44" x 32' (1,117 x 9)	350 (317)	100 (0.5)	18	3/8" (9.5)	(2) 20 (15.0)	2,800 (0.17)	1,400 (0.08)	675 (0.04)
	260 (235)	75 (0.3)	14		(2) 15 (11.0)			
	170 (154)	50 (0.2)	10		(2) 10 (7.5)			

AGGRE-WASHER™ PORTABLE PLANT – HORIZONTAL SCREENS								
Screw Diameter inch (mm)	Screen Length ft. (m)	Peripheral Screw Speed FPM (MPS)	Speed RPM	Max. Material Size inch (mm)	Motor Size HP (kw)	Water Capacity - GPM (m³/sec)		
						100 Mesh	150 Mesh	200 Mesh
36" (914)*	12' (3.6)	200 (1.0)	20	3/4" (19)	15 (11.0)	700 (0.04)	330 (0.02)	160 (0.01)
36" (914)*	16' (4.8)	200 (1.0)	20	3/4" (19)	15 (11.0)	700 (0.04)	330 (0.02)	160 (0.01)
36" (914)**	20' (6.0)	200 (1.0)	20	3/4" (19)	15 (11.0)	700 (0.04)	330 (0.02)	160 (0.01)
44" (1,117)	16' (4.8)	200 (1.0)	17	3/4" (19)	20 (15.0)	1,600 (0.10)	750 (0.04)	425 (0.02)
(2) 36" (914)	16' (4.8)	200 (1.0)	20	3/4" (19)	(2) 15 (11.0)	1,250 (0.07)	620 (0.03)	340 (0.02)
(2) 36" (914)	20' (6.0)	200 (1.0)	20	3/4" (19)	(2) 15 (11.0)	1,250 (0.07)	620 (0.03)	340 (0.02)
(2) 44" (1,117)	16' (4.8)	200 (1.0)	17	3/4" (19)	(2) 20 (15.0)	2,800 (0.17)	1,400 (0.08)	675 (0.04)
(2) 44" (1,117)	20' (6.0)	200 (1.0)	17	3/4" (19)	(2) 20 (15.0)	2,800 (0.17)	1,400 (0.08)	675 (0.04)

AGGRE-DRY® PORTABLE PLANT – HORIZONTAL SCREENS								
Screw Diameter inch (mm)	Screen Length ft. (m)	Peripheral Screw Speed FPM (MPS)	Speed RPM	Max. Material Size inch (mm)	Motor Size HP (kw)	Water Capacity - GPM (m³/sec)		
						100 Mesh	150 Mesh	200 Mesh
36" (914)	12' (3.6)	200 (1.0)	20	3/4" (19)	15 (11.0)	700 (0.04)	330 (0.02)	160 (0.01)
36" (914)	16' (4.8)	200 (1.0)	20	3/4" (19)	15 (11.0)	700 (0.04)	330 (0.02)	160 (0.01)
36" (914)	20' (6.0)	200 (1.0)	20	3/4" (19)	15 (11.0)	700 (0.04)	330 (0.02)	160 (0.01)
48" (1,219)	16' (4.8)	200 (1.0)	16	3/4" (19)	25 (18.5)	1,700 (0.10)	850 (0.05)	450 (0.02)
48" (1,219)	20' (6.0)	200 (1.0)	16	3/4" (19)	25 (18.5)	1,700 (0.10)	850 (0.05)	450 (0.02)
60" (1,524)	20' (6.0)	200 (1.0)	13	3/4" (19)	40 (30.0)	2,200 (0.13)	1,050 (0.06)	600 (0.03)

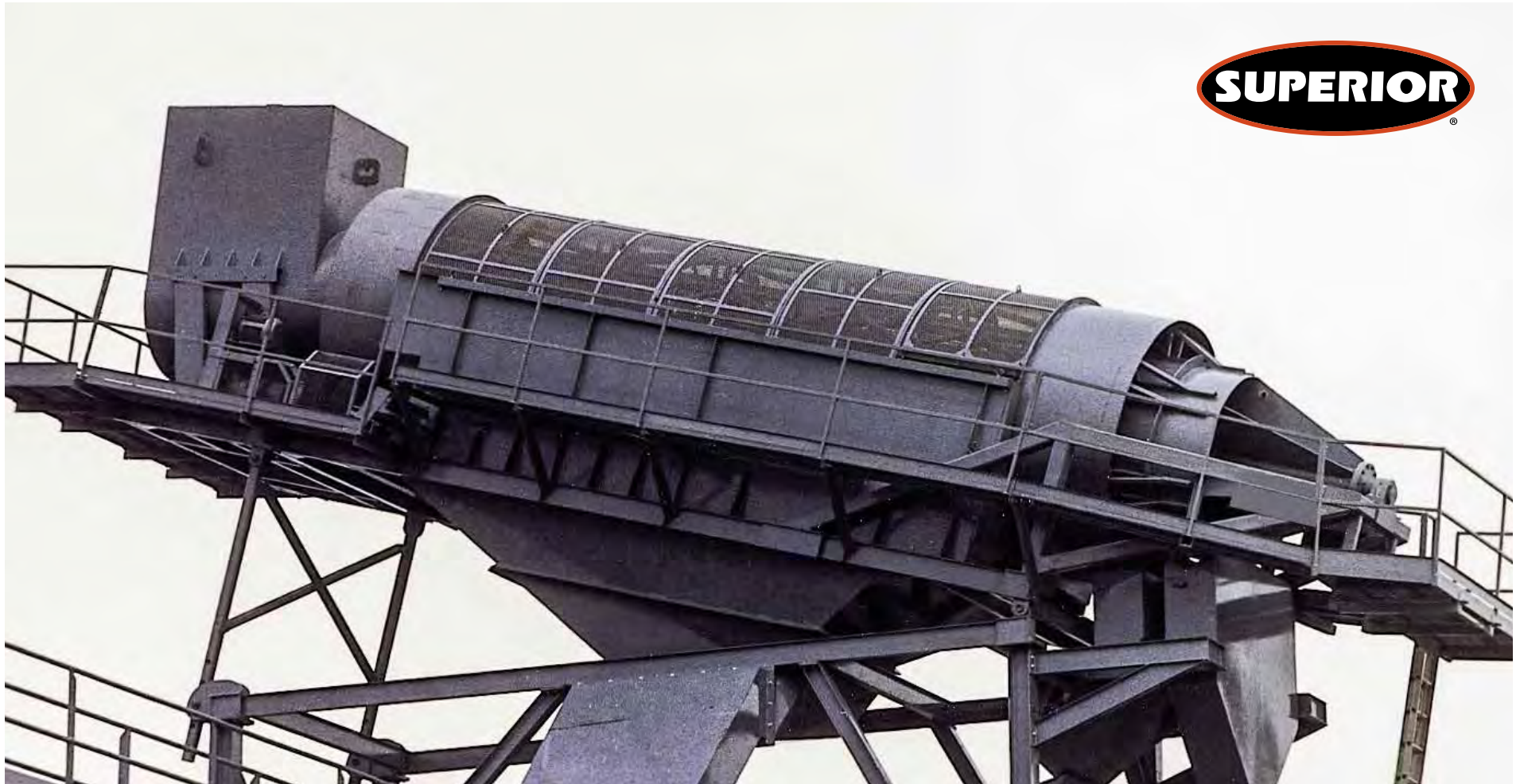
*Screw length = 25-ft

** Screw length = 28-ft

SPECIFICATIONS

SKID MOUNTED AGGRE-WASHER™ – HORIZONTAL OR INCLINE SCREENS

Screw Diameter inch (mm)	Screen Length ft. (m)	Peripheral Screw Speed FPM (MPS)	Speed RPM	Max. Material Size inch (mm)	Motor Size HP (kw)	Water Capacity - GPM (m³/sec)		
						100 Mesh	150 Mesh	200 Mesh
36" (914)	12' (3.6)	200 (1.0)	20	3/4" (19)	15 (11.0)	700 (0.04)	330 (0.02)	160 (0.01)
36" (914)	16' (4.8)	200 (1.0)	20	3/4" (19)	15 (11.0)	700 (0.04)	330 (0.02)	160 (0.01)
(2) 36" (914)	16' (4.8)	200 (1.0)	20	3/4" (19)	(2) 15 (11.0)	1,250 (0.07)	620 (0.03)	340 (0.02)
44" (1,117)	12' (3.6)	200 (1.0)	17	3/4" (19)	20 (15.0)	1,600 (0.10)	750 (0.04)	425 (0.02)
44" (1,117)	16' (4.8)	200 (1.0)	17	3/4" (19)	20 (15.0)	1,600 (0.10)	750 (0.04)	425 (0.02)
(2) 44" (1,117)	16' (4.8)	200 (1.0)	17	3/4" (19)	(2) 20 (15.0)	2,800 (0.17)	1,400 (0.08)	675 (0.04)
44" (1,117)	20' (6.0)	200 (1.0)	17	3/4" (19)	20 (15.0)	2,800 (0.17)	1,400 (0.08)	675 (0.04)
(2) 44" (1,117)	20' (6.0)	200 (1.0)	17	3/4" (19)	(2) 20 (15.0)	2,800 (0.17)	1,400 (0.08)	675 (0.04)
(2) 48" (1,219)	16' (4.8)	200 (1.0)	16	3/4" (19)	(2) 25 (18.5)	1,700 (0.10)	850 (0.05)	450 (0.02)
(2) 48" (1,219)	20' (6.0)	200 (1.0)	16	3/4" (19)	(2) 25 (18.5)	1,700 (0.10)	850 (0.05)	450 (0.02)
48" (1,219)	16' (4.8)	200 (1.0)	16	3/4" (19)	25 (18.5)	1,700 (0.10)	850 (0.05)	450 (0.02)
54" (1,371)	16' (4.8)	200 (1.0)	15	3/4" (19)	30 (22.0)	1,900 (0.11)	950 (0.05)	575 (0.03)
(2) 54" (1,371)	20' (6.0)	200 (1.0)	15	3/4" (19)	(2) 30 (22.0)	1,900 (0.11)	950 (0.05)	575 (0.03)
60" (1,524)	16' (4.8)	200 (1.0)	13	3/4" (19)	40 (30.0)	2,200 (0.13)	1,050 (0.06)	600 (0.03)
60" (1,524)	20' (6.0)	200 (1.0)	13	3/4" (19)	40 (30.0)	2,200 (0.13)	1,050 (0.06)	600 (0.03)



ROTARY SCREEN

66" x 42' - 96" x 66'

- **Heavy-duty truss frame** allows operation of an inner scalping screen.
- Produce up to **three products** from a single rotary screen.
- Planetary type gear reduction allows screen speed adjustment to **meet specific production** requirements.
- Dual wheel drive ensures **reliable, accurate rotation** of the screen drum.

SPECIFICATIONS

ROTARY SCREEN			
Model Number	Outer Drum Diameter inch (mm)	Inner Drum Length inch (mm)	Drum Length ft (m)
TF 66-16	66" (1,675)	42" (1,065)	16' (5.0)
TF 96-16	96" (2,440)	66" (1,675)	16' (5.0)
TF 96-20	96" (2,440)	66" (1,675)	20' (6.0)

OPTIONS

- WALKWAY AND HAND RAILING
- RECEIVING HOPPERS
- RUBBER-LINED PUMP BOXES
- DISCHARGE CHUTES
- HOPPERS
- SUPPORT STRUCTURE



AGGRE-SAVER WASHOUT SYSTEM

Up to 2.2 yards per minute

- Recover aggregate material from ready-mix trucks and **avoid wasteful material disposal.** ■
- Eliminate truck washdown time**, end-of-shift overtime hours and costly trips to disposal site. ■
- Unique receiving hopper allows **two ready-mix trucks** to discharge at the same time. ■
- Bolt-on, heavy-duty shoes can be adjusted for **years of additional service life.** ■

FEATURES



SINGLE DECK VIBRATING SCREEN

RECEIVING HOPPER WITH SPRAY SYSTEM

- Allows two ready-mix trucks to discharge at one time.
- Equipped spray system for fast, easy clean up.

FINE MATERIAL SCREW

- More clearance between belly pan and screw shaft to accommodate larger size aggregate.
- Flights are protected with adjustable 1" thick rubber wear shoes.
- Adjustable weir plate keeps water at optimum operating level.
- Extended shaft and slinger protects lower bearing from water leakage.



UNLOAD TWO READY-MIX TRUCKS AT ONCE

DRIVE SYSTEM

- Electrical 3-phase, 60Hz, 460V motor
- Shaft-mounted gear reducer
- Belt and guarding

TANK

- Skid frame
- Lifting points
- Support legs
- Drain for easy clean out
- Flush-back nozzle enhances dewatering efficiency



RECEIVING HOPPER

OPTIONS

- SINGLE DECK VIBRATING SCREEN MOUNTED AT FEED OR DISCHARGE POINT
- FOUR TRUCK WASHOUT HOPPER
- AUTOMATIC CONTROL SYSTEM FOR WASHOUT
- 4" WATER PUMP
- TRUCK WASHOUT SYSTEM
- CLEAN-OUT DOORS FOR BELLY PAN
- SPRAY SYSTEM
- A532 AND URETHANE WEAR SHOES
- GUARDING

SPECIFICATIONS

AGGRE-SAVER						
Screw Size in x ft (mm x m)	Screw Diameter inch (mm)	Processing Time yrd/min (m/m)	Length ft (m)	Speed RPM	Motor Size HP (kw)	Estimated Empty Weight lbs (kg)
36" x 25' (915 x 8)	36" (915)	1.2 (1.0)	25' (8.0)	20	15 (11.0)	10,800 (4,900)
44" x 32' (1,120 x 10)	44" (1,120)	2.2 (2.0)	32' (10.0)	17	20 (15.0)	16,800 (7,620)





SUPERIOR-IND.COM

