



VALOR™ VSI CRUSHER

V250 / V400 / V600 / V800

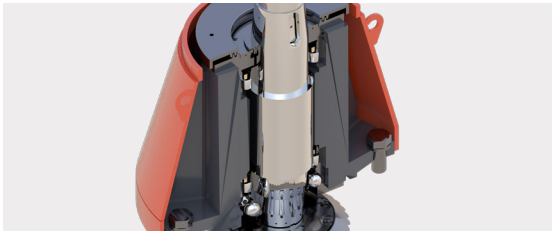
- Proudly made in America at Superior's new Pekin, Illinois plant.
- Stronger, safer and more convenient design incorporates the voice of customers.
- Backed by a service and support team committed to exceeding customer expectations.
- Substantial inventory of parts for immediate, lightning fast deliveries.

VALOR VSI KEY ADVANTAGES



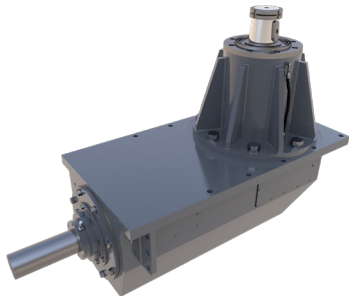
HYDRAULIC LID LIFTER

- Safe and easy access to crushing chamber
- Automatic and manual safety interlocks
- Simple hydraulic controls
- Manual worm gear driven lid swing mechanism



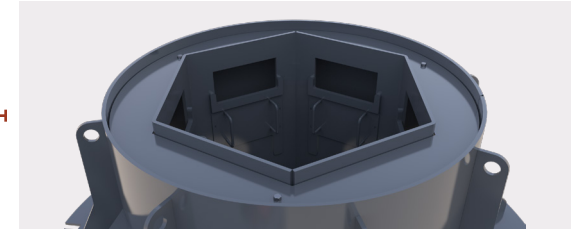
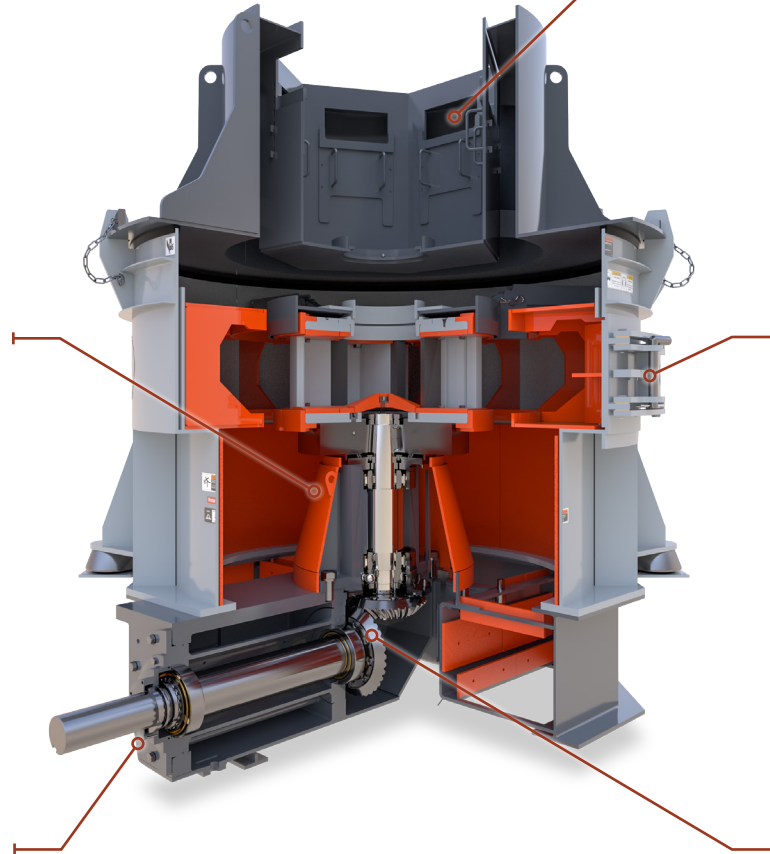
PEDESTAL / BEARING CARTRIDGE

- Greaseless and maintenance free upper seal
- High capacity upper and lower cylindrical roller bearing
- Dedicated thrust bearing



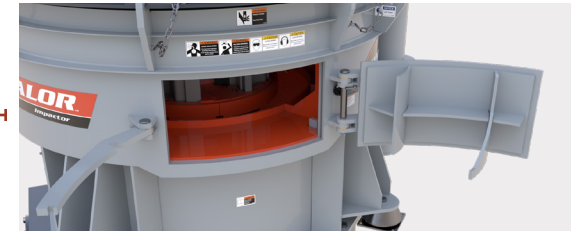
RIGHT ANGLE PINION GEAR BOX

- Cartridge style for easy removal and maintenance
- Simplifies drive motor arrangement (deck mount)
- Safe and simple access to drive components



BYPASS FEED (ROTOR CONFIGURATIONS ONLY)

- Decreases HP usage while increasing crusher throughput
- Capable of bypassing up to 50% feed directly into crushing chamber



INSPECTION DOOR

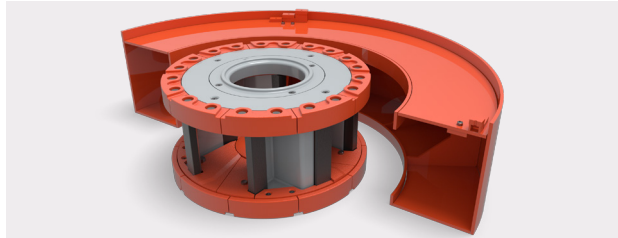
- Provides inspection access to crushing chamber
- Provides quick and safe access to the crushing chamber and reduces downtime



SPIRAL BEVEL GEARS

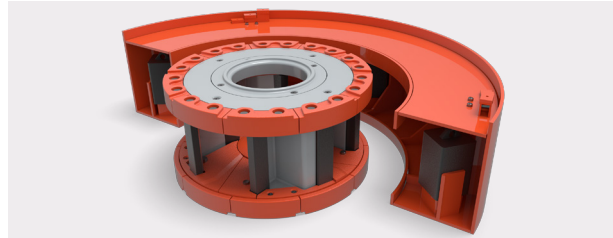
- Spiral tooth gearing engages more gradually giving an efficient transfer of horsepower.
- Proven to perform at higher speeds with less noise and vibration.

CRUSHING CHAMBER CONFIGURATIONS



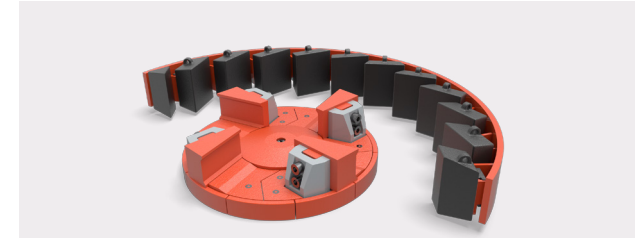
ROCK ON ROCK

- Enclosed rotor and rock shelf
- Feed sizes to 2"
- High abrasion materials



ROCK ON ANVIL (HYBRID ROCKBOX)

- Enclosed rotor and anvils
- Feed sizes to 3"
- Medium to high abrasion materials

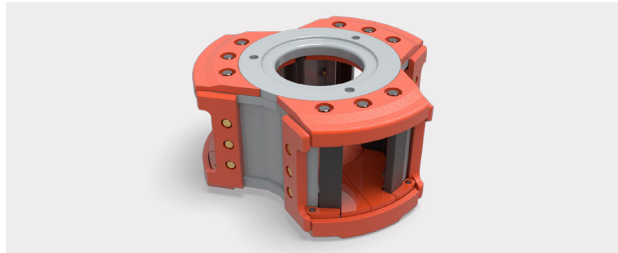


SHOE AND ANVIL*

- Open shoe table and anvil
- Feed sizes to up 8"
- Low to medium abrasion materials

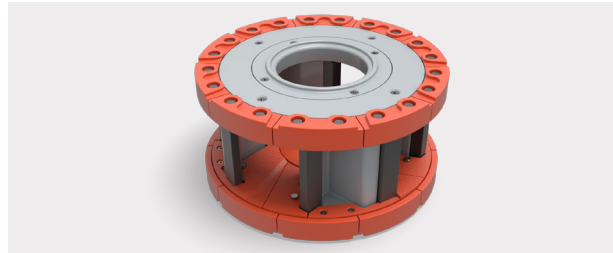
* Requires different lid assembly

ROTOR DESIGNS



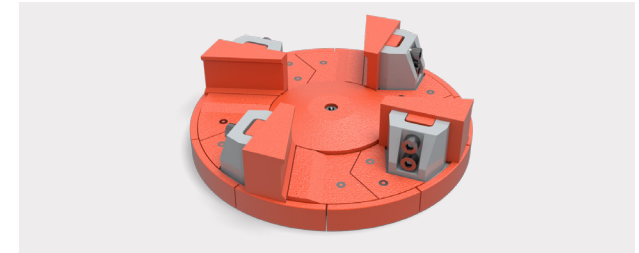
SYMMETRY ROTOR

- Rotor is completely symmetrical in design
- Allows for operation in both rotation directions
- Simple electrical controls



4/6 PORT ROTOR

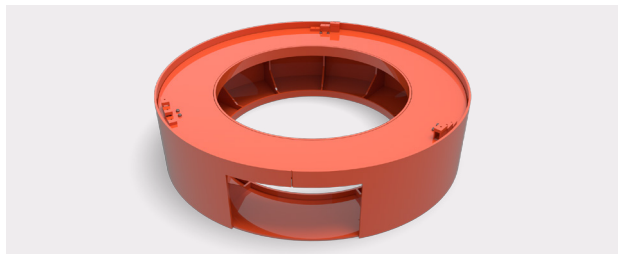
- Designed with the fewest parts possible
- Parts interchange between top and bottom
- No hardfacing required



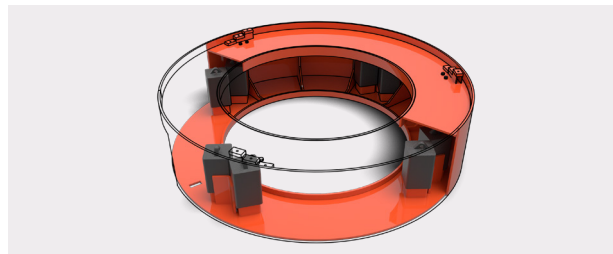
OPEN SHOE TABLE

- 4, 5, and 6 shoes available
- 28% chrome and ceramic available
- Designed for easy maintenance

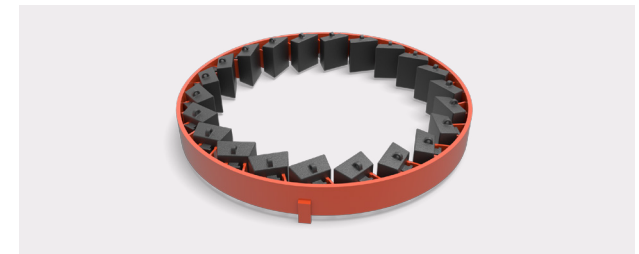
ROCK BOX



HYBRID ROCK BOX

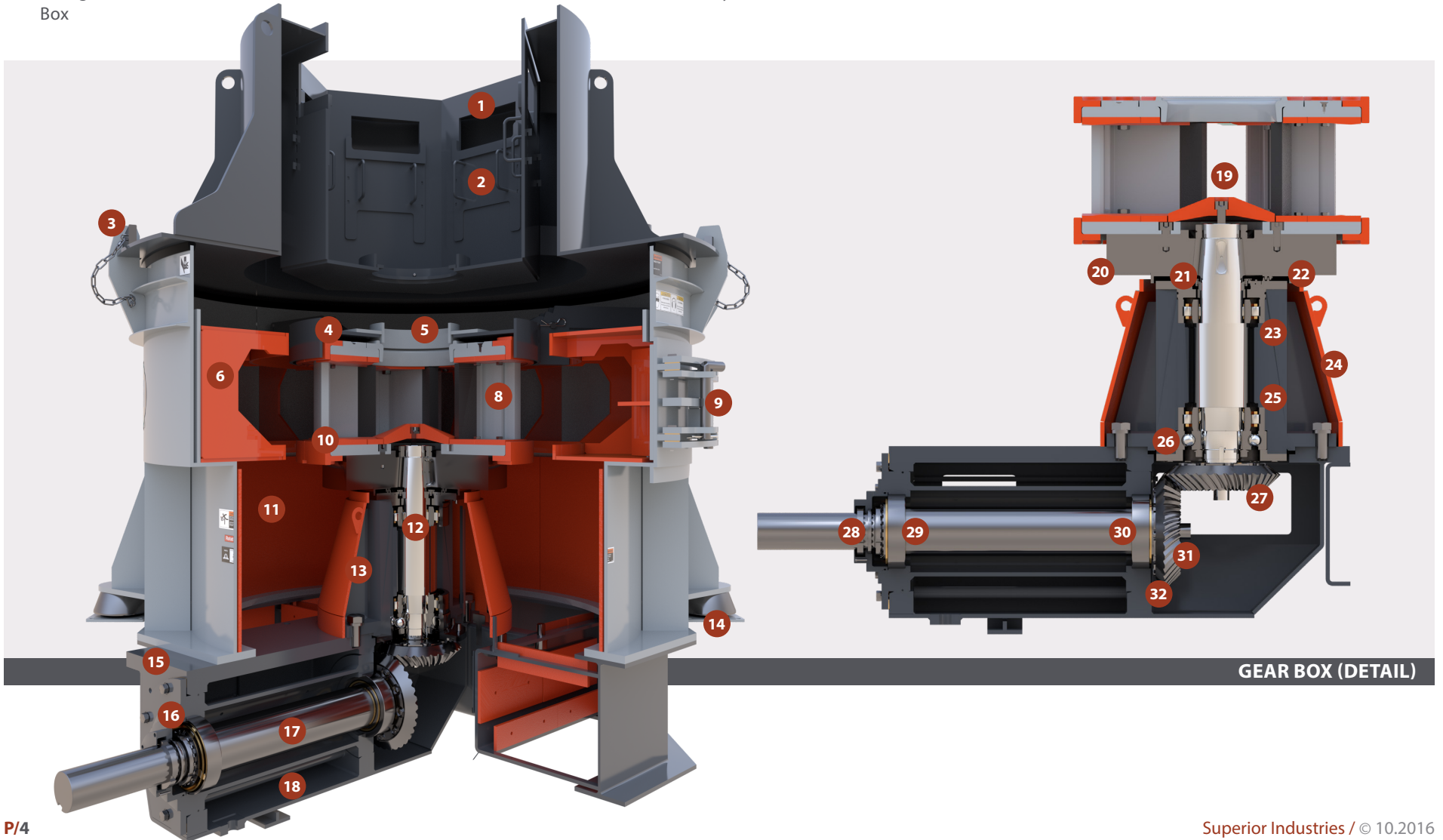


ANVIL RING



FEATURES

- | | | | | | | |
|------------------------------------|--|--------------------------------------|---|--------------------------------------|--------------------------------------|------------------------------|
| 1/ Bypass Feed Inlet | 7/ Standard Hydraulic Lid Lifter (not shown) | 11/ Single Piece Rolled AR Tub Liner | 15/ Cartridge Style, Removable Gear Box | 21/ Greaseless Upper Main Seal | 25/ Cylindrical Roller Lower Bearing | 29/ Outboard Pinion Bearing |
| 2/ Adjustable Bypass Feed Doors | 8/ 4 Port Autogenous Rotor | 12/ Astralloy™ Main Shaft | 16/ Tachometer Sensor | 22/ Integral Dust and Debris Seal | 26/ Dedicated Thrust Ball Bearing | 30/ Inboard Pinion Bearing |
| 3/ Positive Lid Lock Safety Wedges | 9/ Side Access Door | 13/ 3 Bearing Pedestal | 17/ 4340 Pinion Shaft | 23/ Cylindrical Roller Upper Bearing | 27/ Spiral Bevel Pedestal Gear | 31/ Spiral Bevel Pinion Gear |
| 4/ Upper Edge Liners | 10/ Lower Edge Liner | 14/ Vibration Isolation Mounts | 18/ Return Oil Sump | 24/ Pedestal Shield | 28/ Tachometer Gear | 32/ Keyless Gear Bushing |
| 5/ Rotor Crown Ring | | | 19/ Center Feed Plate | | | |
| 6/ Autogenous Rock Box | | | 20/ Rotor Flywheel | | | |



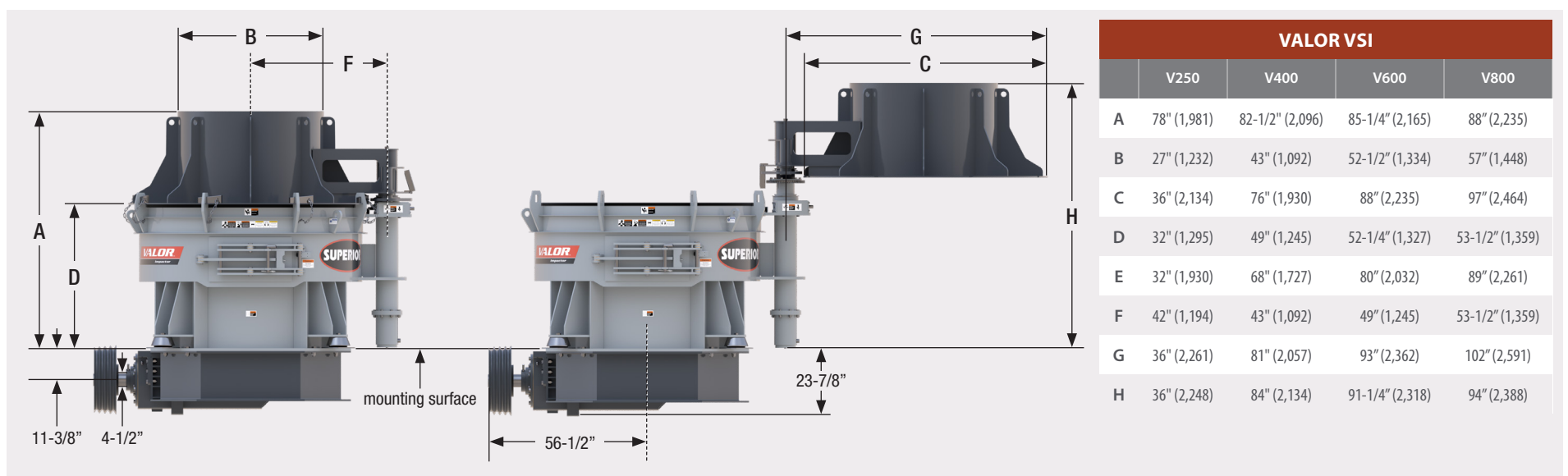
GEAR BOX (DETAIL)

SPECIFICATIONS

VALOR VSI					
MODELS	Configuration	Max. Feed Size Inch (mm)	Table/ Rotor Dia. Inch (mm)	Est. Max. Throughput* STPH (MTPH)	Typical HP Range
V250	Impeller Table and Anvils	2" (50.8)	28" (711.2)	150 (135)	125-250
	Rotor and Anvil	1" (25.4)	27" (685.8)	125 (115)	125-250
	Rotor and Rockbox	1-1/2" (38.1)	27" (685.8)	*125 (115)	200-250
V400	Impeller Table and Anvils	4" (101.6)	36" (914.4)	250 (230)	200-400
	Rotor and Anvil	3" (76.2)	32" (812.8)	275 (250)	300-400
	Rotor and Rockbox	2-1/2" (63.5)	32" (812.8)	*275 (250)	300-400
V600	Impeller Table and Anvils	4" (101.6)	42" (1066.8)	400 (360)	400-600
	Rotor and Anvil	3" (76.2)	36" (914.4)	350 (320)	350-600
	Rotor and Rockbox	2-1/2" (63.5)	36" (914.4)	*350 (320)	350-600
V800	Impeller Table and Anvils	8" (203.2)	46" (1168.4)	600 (550)	600-800
	Rotor and Anvil	3" (76.2)	40" (1016)	500 (450)	400-800
	Rotor and Rockbox	2-1/2" (63.5)	40" (1016)	*500 (450)	400-800

*No bypass feed

SPECIFICATIONS

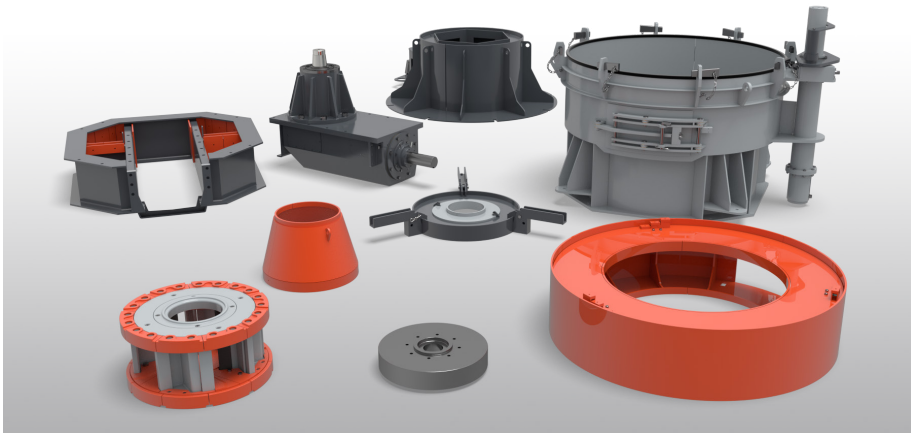


WORLD-CLASS SERVICE AND SUPPORT



- Strive for a 2 hour response time from service agents.
- US-based support staff limits wait time for North American customers.
- Commitment to getting crusher operating as expected.
- Investment in smart, hard-working and industry experienced service team.
- Direct line to technical support group, 24-hours a day at **+1 (320) 589-7485**.

QUICK DELIVERED PARTS



- Large inventory increases parts availability and reduces wait time.
- Centrally-located warehouse for quick deliveries in North America.
- Critical third party parts are inspected for integrity.
- High quality factory parts are backed by fitup assurance.
- 1-Year Parts Warranty:
 - ↳ Covers new parts against defects in material or workmanship.
 - ↳ Excludes normal wear and tear.

WARRANTY



- We offer the industry's only 2-year product and 1-year parts' warranties, confirming our commitment to you.