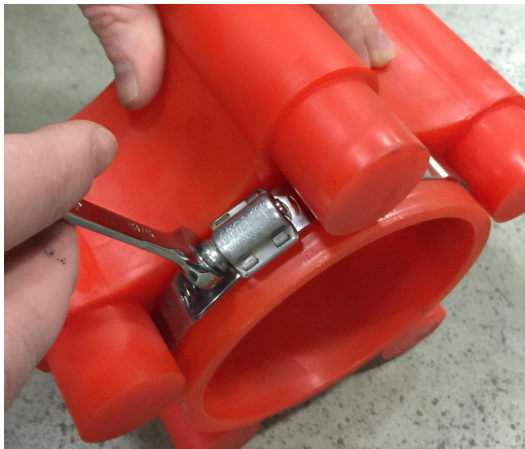




EASILY SLIDE DISC ONTO RETURN ROLLER



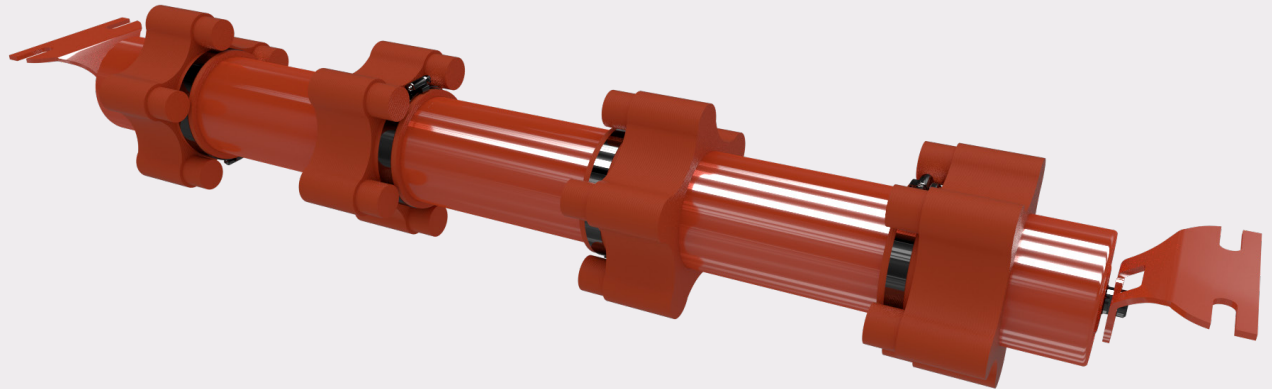
STANDARD HOSE CLAMP SECURES DISC

QUICK SPECS

Classes: CEMA C and D

Roll Diameter: 4", 5" and 6"

Belt Widths: 18" to 60"



URATHON® BEATER ROLLS

Cost-Effectively Shake Off Carryback Material

- **Economical method** of removing carryback material from bottom of belting.
- Maintenance free lobed discs cause light vibration to **dislodge material from belting**.
- Ideal installation is above stockpile, screen or bin so **material hits discharge target**.
- Purchase as **individual urethane discs** or complete idler with pre-assembled discs.

SPECIFICATIONS

CEMA C SPECIFICATIONS (PRE-ASSEMBLED DISCS AND IDLER)

| Roll Diameter | | | Belt Width (Inches) | Number of Discs | Total Assembly Weight (lbs) | | | Lobed Disc Installation (inches) see illustration below | | |
|---------------|-------------|-------------|---------------------|-----------------|-----------------------------|----|----|---|------|---------|
| 4" | 5" | 6" | | | 4" | 5" | 6" | A | B | C |
| C4-RETUB-18 | C5-RETUB-18 | C6-RETUB-18 | 18" | 2 | 20 | 26 | 33 | 4" | 3.5" | 6-1/4" |
| C4-RETUB-24 | C5-RETUB-24 | C6-RETUB-24 | 24" | 2 | 24 | 30 | 42 | | | 12-1/4" |
| C4-RETUB-30 | C5-RETUB-30 | C6-RETUB-30 | 30" | 3 | 29 | 37 | 48 | | | 7-1/2" |
| C4-RETUB-36 | C5-RETUB-36 | C6-RETUB-36 | 36" | 3 | 32 | 42 | 56 | | | 10-1/2" |
| C4-RETUB-42 | C5-RETUB-42 | C6-RETUB-42 | 42" | 4 | 37 | 47 | 63 | | | 7-3/4" |
| C4-RETUB-48 | C5-RETUB-48 | C6-RETUB-48 | 48" | 4 | 38 | 54 | 69 | | | 9-3/4" |
| C4-RETUB-54 | C5-RETUB-54 | C6-RETUB-54 | 54" | 4 | 48 | 60 | 80 | | | 11-3/4" |
| C4-RETUB-60 | C5-RETUB-60 | C6-RETUB-60 | 60" | 5 | 53 | 68 | 87 | | | 9-1/2" |

CEMA D SPECIFICATIONS (PRE-ASSEMBLED DISCS AND IDLER)

| Roll Diameter | | | Belt Width (Inches) | Number of Discs | Total Assembly Weight (lbs) | | | Lobed Disc Installation (inches) see illustration below | | |
|---------------|-------------|-------------|---------------------|-----------------|-----------------------------|----|-----|---|------|---------|
| 4" | 5" | 6" | | | 4" | 5" | 6" | A | B | C |
| D4-RETUB-18 | D5-RETUB-18 | D6-RETUB-18 | 18" | 2 | 20 | 28 | 36 | 4" | 3.5" | 6-1/4" |
| D4-RETUB-24 | D5-RETUB-24 | D6-RETUB-24 | 24" | 2 | 25 | 33 | 45 | | | 12-1/4" |
| D4-RETUB-30 | D5-RETUB-30 | D6-RETUB-30 | 30" | 3 | 30 | 41 | 52 | | | 7-1/2" |
| D4-RETUB-36 | D5-RETUB-36 | D6-RETUB-36 | 36" | 3 | 34 | 46 | 60 | | | 10-1/2" |
| D4-RETUB-42 | D5-RETUB-42 | D6-RETUB-42 | 42" | 4 | 38 | 52 | 67 | | | 7-3/4" |
| D4-RETUB-48 | D5-RETUB-48 | D6-RETUB-48 | 48" | 4 | 42 | 57 | 74 | | | 9-3/4" |
| D4-RETUB-54 | D5-RETUB-54 | D6-RETUB-54 | 54" | 4 | 46 | 62 | 82 | | | 11-3/4" |
| D4-RETUB-60 | D5-RETUB-60 | D6-RETUB-60 | 60" | 5 | 51 | 69 | 91 | | | 9-1/2" |
| D4-RETUB-72 | D5-RETUB-72 | D6-RETUB-72 | 72" | 5 | 59 | 80 | 105 | 12-1/2" | | |

INDIVIDUAL LOBED DISCS

| Part Number | Description | Outside Diameter |
|-------------|---------------|------------------|
| 09-000018 | 4" Lobed Disc | 7.2" |
| 09-000019 | 5" Lobed Disc | 8.2" |
| 09-000020 | 6" Lobed Disc | 9.2" |

