



**SUPERIOR**



# TELESTACKER<sup>®</sup> CONVEYOR

110' / 130' / 136' / 150' / 158' / 170' / 190'

With more than **1,000 units manufactured** and capacities up to 5,000 TPH, Superior is the world's leading builder of telescopic conveyors. ■

Our commitment to **cutting-edge technology** means we're working to identify, create and perfect the TeleStacker Conveyor. ■

Our legacy of **structurally sound engineering and manufacturing** is vital for safety and endurance in all applications. ■

Defeat costly material segregation and build the **highest volume, in-spec stockpiles**. ■

# HIGHLIGHTS



1/ **CHEVRON® PULLEY:** Patented v-shaped pulley deflects fugitive material to extend pulley life and lessen belt wear. In addition, constant belt contact reduces vibration and noise generation by 50 decibels.

2/ **SEALING SYSTEM:** Prevents material spillage in load zone by maintaining a tight seal between belt and hopper skirting.

3/ **SONICSCOUT™ MATERIAL SENSOR:** If no material is present, sensor sends signal to automation program, sounding an alarm and pauses automation until action is taken.

4/ **METAL GUARDING:** Safeguards are essential to protect workers from injury. Superior's guarding is identified easily with safety yellow paint.

5/ **EXTERRA® BELT CLEANERS:** Patented Superior brand scraper blades designed with thicker edge, for extra material at crucial point of attack, providing longer life.

6/ **MATERIAL LEVEL SENSOR:** No contact sensor feeds automation program stockpile height. Sensor is not affected by dust.

7/ **NAVIGATOR® RETURN TRAINER:** Patented return roller constantly guides and centers belt to prevent misalignment, common to conveyors that constantly move.

8/ **CAM ROLLERS:** Patented center pivot design supports the weight of the entire stinger conveyor equally across all rollers, which reduces stress on frame which provides longer life.

9/ **STINGER SAFETY STOPS:** Designs that protect your investment. Safety stops immediately react in the event of stinger cable failure, minimizing structure damage.

10/ **SLIDETRACK SYSTEM:** A support system for electrical and hydraulic cables, this new and improved technology was designed with long-lasting galvanized steel and no catch points for fugitive material. While the machine is locked out, simply detach a side guard for easy access to maintenance.

11/ **RAISE CYLINDERS:** Used to raise and lower stacker and are specially designed for safety. Counterbalance valve keeps the raise cylinders from lowering if there is a hydraulic failure.

12/ **FB® UNDERCARRIAGE:** Patented for maximum undercarriage support and the most rigid lateral stability. Load sharing hydraulic cylinders add even greater structural support and safety.

13/ **AXLE CONFIGURATION:** Three styles of road/radial travel axles for applications from exceptionally road portable to fixed radial stacking.

14/ **PILEPRO™ AUTOMATION:** Tested and proven automation program solves pile segregation issues and produces a uniformed quality spec material. Automation program signals operator when service maintenance is required.



**COMPENSATION LINKAGE**



**EXTERRA® SFL DUAL BELT CLEANER**



**HYDRAULIC LANDING JACKS**



**WALKWAY (ON MAIN CONVEYOR)**



**URATHON® RETURN ROLL**



**BELT COVERS**

- COMPENSATION LINKAGE (FD AXLE)
- 4-WHEEL DRIVE (FD AXLE)
- EXTERRA® BELT CLEANER
- POWER TRAVEL SENSOR
- SELF-ALIGNING IDLERS
- PORTABLE JACKS
- AXLE JACKS
- WALKWAYS
- DUAL POWER TRAVEL (XTP AXLE)
- URATHON® RETURN ROLL

- WIRED REMOTE SYSTEM
- DUAL POWER SOURCE
- SHIELD-ALL® GUARD
- COLD WEATHER KIT
- WIRELESS REMOTE
- SPRAY BARS
- MAINFRAME CONVEYOR COVERS
- STINGER CONVEYOR COVER
- HYDRAULIC LANDING JACKS
- PILEPRO™ AUTOMATION

- AUTO GREASER
- MOXIE® ROLLS
- BELT UPGRADE
- IMPACT IDLERS
- ON-BOARD COUNTERWEIGHT (XTP AXLE)
- GALVANIZED
- BELT SCALE
- TOW EYE

# SAFETY

## A/ FB® UNDERCARRIAGE

- Patented undercarriage support system is designed with more steel for rock solid bracing.
- Fully braced inner structure glides within fully braced outer structure to ensure stability and safety.
- Mounting position of hydraulics allow cylinders to aid in structural support.

## B/ STINGER SAFETY CATCH

- Continuously monitor cable tension to stinger conveyor.
- Immediately reacts in event of stinger cable failure.
- Spring loaded mechanical device is field tested and proven.

## C/ STINGER CROSS BRACING

- Increased bracing maintains structural rigidity under heavy material and wind loads.

## D/ ROBUST TRUSS

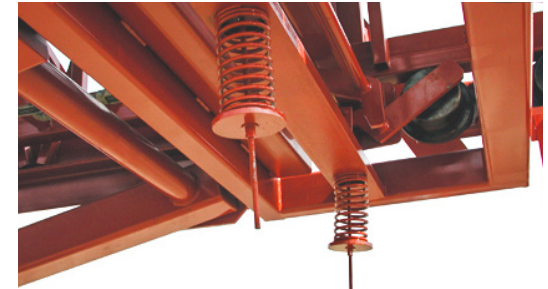
- Condensed lattice spacing increases structural integrity of conveyor truss design.

## E/ CAM ROLLERS

- Patented, large 8" diameter rollers support the stinger conveyor as it travels.
- Center pivot design supports conveyor weight equally on all rollers.
- Rollers at top and bottom of stinger conveyor for extra stability.



A/ PATENTED FB UNDERCARRIAGE



B/ STINGER SAFETY CATCH



C/ STINGER CROSS BRACING



D/ ROBUST TRUSS



E/ CAM ROLLERS

## PATENTED FD AXLE



HYDRAULICALLY TRANSFER FROM ROAD TO OPERATION IN SECONDS

## XTP SWING AXLE



PHYSICALLY TRANSFER FROM ROAD TO OPERATION IN MINUTES



HYDRAULICALLY ADJUST TIRES TO OFFSET UNEVEN TERRAIN



CONCRETE PAD PROVIDES LEVEL RUNWAY



ENCLOSED DRIVE PROTECTS GEARING FROM DEBRIS



PULL T-HANDLE TO ENGAGE POWER TRAVEL; NO CHAIN DRIVE



TRACKS CONQUER LOW PRESSURE SOILS



LINK ARMS SECURE ROAD AND RADIAL TIRES

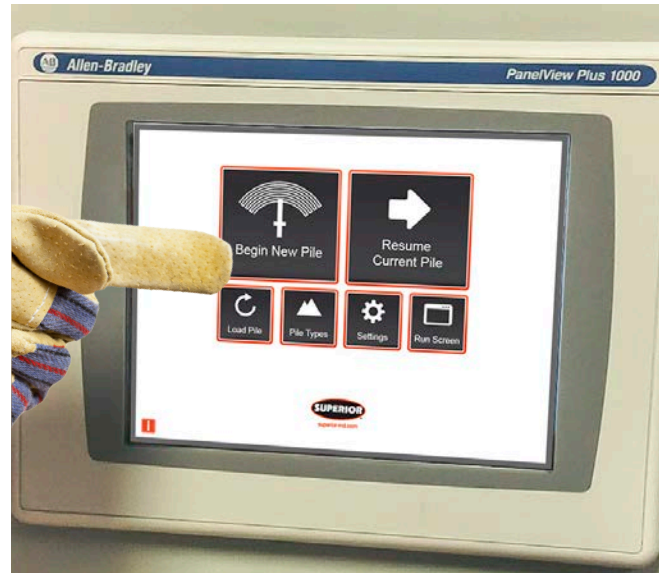
# PILEPRO™ AUTOMATION

- In-house automation engineers reduce reliance on third parties.
- Step by step program is easy to setup and understand.
- Exclusive zoning technique builds higher volume stockpile on same footprint.

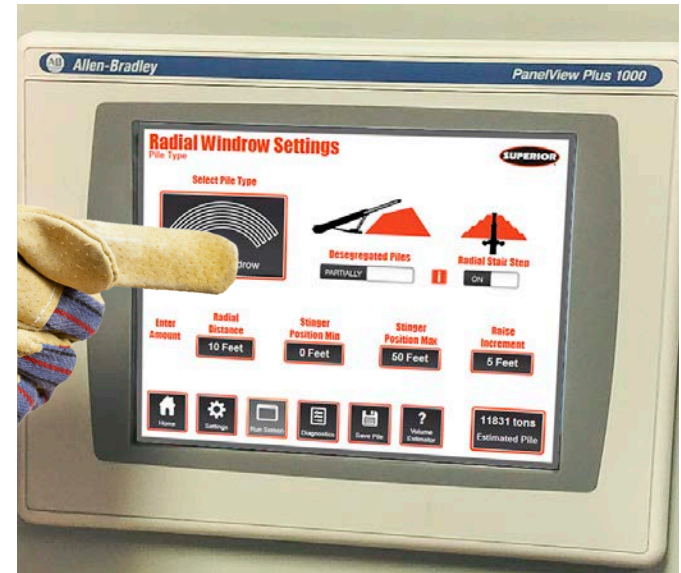
## NEW FD AXLE AUTO LEVEL

Standard on all FD Axle models, an auto level feature maintains a balanced head pulley, which greatly improves effective belt tracking across uneven terrain. (Patent Pending)

- Special diagnostics screen allows users to quickly pinpoint faults.
- Proactive maintenance reminders signal operators to complete conveyor upkeep tasks.
- Onscreen pile volume estimator reports approximate tonnage based on parameters set.
- Save settings for up to four unique pile configurations.



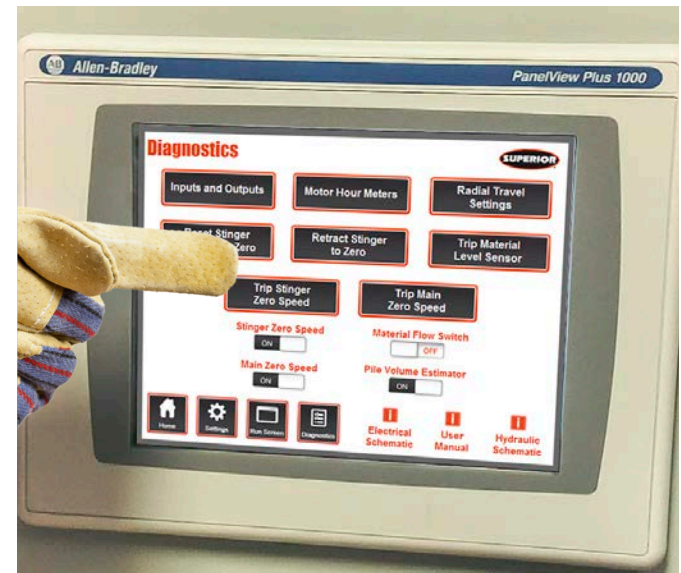
**TOUCH SCREEN REACTS TO GLOVE CONTACT**



**SET PILE PARAMETERS IN VISUAL SETTING SCREEN**



**RECALL 1 OF 4 PREVIOUSLY SAVED PILE TYPES**



**DIAGNOSTICS HELP IDENTIFY THE SOURCE OF ISSUE**

# PHOTO GALLERY



**LOW PROFILE ELIMINATES TRANSFER CONVEYOR BETWEEN PLANT AND STACKER**



**72" X 190' STOCKPILES AT 5,000 TPH**



**FD AXLE TRANSFERS FROM ROAD TO STOCKPILE MODE IN SECONDS**



**RADIAL WINDROW STOCKPILING ACHIEVES IN-SPEC MATERIAL MIX**



**EQUIPPED WITH FD TRACKS, THIS UNIT CONQUERS LOW PRESSURE SOILS**



**AT A RAILYARD, THIS UNIT CREATES EIGHT UNIQUE MATERIAL STOCKPILES**



**THE MOST EFFECTIVE SOLUTION FOR CONTROLLING SEGREGATION**



**A 190' TSXTP IS CAPABLE OF PRODUCING A 209,300 CUBIC YARD STOCKPILE**

# FD AXLE TSFD SPECIFICATIONS

OPERATING DIMENSIONS	110'	130'	136'*	150'	158'*
Conveyor Length (m)	110'-0" (33.5)	130'-0" (39.6)	136'-0" LP (41.5)	150'-0" (45.7)	158'-0" LP (48.0)
Highest Extended Discharge Height (m)	41'-3" (12.6)	45'-5" (13.8)	44'-0" (13.4)	52'-9" (16.1)	48'-10" (14.8)
Lowest Extended Discharge Height (m)	18'-10" (5.7)	19'-4" (5.9)	18'-6" (5.6)	19'-6" (5.9)	19'-6" (5.9)
Highest Retracted Discharge Height (m)	25'-0" (7.6)	27'-3" (8.3)	27'-1" (8.2)	30'-10" (9.4)	30'-10" (9.4)
Lowest Retracted Discharge Height (m)	11'-8" (3.5)	13'-1" (4.0)	12'-8" (3.8)	12'-6" (3.8)	12'-4" (3.7)
Anchor Pivot to Center of Axle (m)	39'-8" (12.1)	49'-0" (15.0)	55'-4" (16.9)	54'-9" (16.7)	70'-11" (21.6)
STOCKPILE DIMENSIONS					
Maximum Pile Height (m)	39'-2" (11.9)	43'-0" (13.1)	43'-2" (13.1)	50'-0" (15.2)	47'-3" (14.4)
Lowered Stockpile Height (m)	15'-6" (4.7)	15'-10" (4.8)	14'-9" (4.5)	16'-7" (5.0)	18'-10" (5.7)
Anchor Pivot to Center of Pile (m)	100'-2" (30.5)	115'-8" (35.2)	126'-4" (38.5)	132'-6" (40.4)	145'-6" (44.3)
TRAVEL DIMENSIONS					
Travel Length - Kingpin to Rear (m)	60'-0" (18.2)	70'-0" (21.3)	80'-0" (24.4)	80'-0" (24.4)	97'-6" (29.7)
Travel Height (m)	12'-5" (3.8)	13'-9" (4.2)	13'-0" (3.9)	13'-10" (4.2)	14'-0" (4.3)
Travel Width (m)	11'-11" (3.6)	11'-11" (3.6)	11'-11" (3.6)	11'-11" (3.6)	11'-6" (3.5)
Kingpin to End of Tow Eye (m)	5'-10" (1.7)	5'-10" (1.7)	5'-10" (1.7)	5'-11" (1.8)	6'-0" (1.9)
Kingpin to Axle (m)	37'-11" (11.5)	47'-7" (14.5)	54'-0" (16.4)	53'-10" (16.4)	70'-0" (21.3)
Axle to Head Pulley (m)	22'-0" (6.7)	22'-4" (6.8)	25'-6" (7.7)	26'-1" (7.9)	27'-6" (8.3)
FD Axle Size	FD40	FD40	FD40	FD50	FD50
Weight at Axle - 36" Belt Width (kg)	30,500 (13,830)	34,800 (15,785)	36,000 (16,329)	40,000 (18,144)	53,200 (24,131)
Weight at Kingpin - 36" Belt Width (kg)	12,500 (5,670)	18,300 (8,300)	13,000 (5,897)	24,600 (11,158)	16,000 (7,257)

\* Denotes Low Profile Model

# XTP AXLE TSXTP SPECIFICATIONS

OPERATING DIMENSIONS	130'	150'	170'	190'
Conveyor Length (m)	130'-0" (39.6)	150'-0" (45.7)	170'-0" (51.8)	190'-0" (57.9)
Highest Extended Discharge Height (m)	47'-0" (13.8)	52'-6" (16.0)	60'-0" (18.5)	67'-8" (20.5)
Lowest Extended Discharge Height (m)	14'-5" (6.0)	15'-10" (6.0)	14'-11" (4.5)	16'-1" (5.0)
Highest Retracted Discharge Height (m)	27'-3" (8.0)	30'-10" (3.0)	38'-6" (11.0)	53'-7" (16.5)
Lowest Retracted Discharge Height (m)	13'-1" (4.0)	12'-6" (4.0)	10'-8" (4.0)	11'-4" (3.5)
Anchor Pivot to Center of Axle (m)	48'-6" (14.5)	56'-4" (17.0)	73'-10" (22.5)	73'-10" (22.5)
STOCKPILE DIMENSIONS				
Maximum Pile Height (m)	44'-5" (13.5)	50'-0" (15.2)	58'-3" (17.7)	66'-1" (20.1)
Lowered Stockpile Height (m)	11'-5" (3.4)	12'-10" (3.9)	11'-11" (3.6)	14'-3" (4.3)
Anchor Pivot to Center of Pile (m)	116'-2" (35.4)	125'-0" (38.1)	153'-9" (46.8)	163'-1" (49.7)
TRAVEL DIMENSIONS				
Travel Length - Kingpin to Rear (m)	80'-0" (24.3)	80'-0" (24.3)	100'-0" (30.5)	115'-0" (35.0)
Travel Height (m)	12'-3" (3.7)	13'-9" (4.2)	13'-9" (4.2)	14'-0" (4.2)
Travel Width (m)	11'-11" (3.6)	11'-11" (3.6)	11'-11" (3.6)	11'-11" (3.6)
Kingpin to End of Tow Eye (m)	5'-10" (1.7)	5'-11" (1.8)	5'-11" (1.8)	5'-11" (1.8)
Kingpin to Axle (m)	52'-3" (15.9)	59'-9" (18.2)	77'-3" (23.5)	94'-6" (28.8)
Axle to Head Pulley (m)	27'-5" (8.3)	20'-4" (6.1)	22'-10" (6.9)	22'-10" (6.9)
Weight at Axle - 36" Belt Width (kg)	37,500 (17,000)	38,000 (17,235)	46,000 (20,865)	47,000 (21,318)
Weight at Kingpin - 36" Belt Width (kg)	13,600 (6,168)	18,550 (8,414)	20,865 (9,464)	22,500 (10,205)

# STOCKPILE CAPACITIES

MAXIMUM STOCKPILE CAPACITIES (MANUAL PILES) ASSUMPTIONS BASED ON MATERIAL WHICH HAS A 37° ANGLE OF REPOSE AND 100 PCF (1.6 t/m <sup>3</sup> ) MATERIAL DENSITY.									
Conveyor Length	Stockpile Height ft x in (m)	Stockpile Volume in Cubic Yards (m <sup>3</sup> )				Stockpile Volume in Tons (MT)			
		Conical	90°	180°	270°	Conical	90°	180°	270°
110 TSFD	39'-0" (11.8)	4,900 (3,200)	19,700 (15,000)	34,400 (26,300)	49,200 (37,600)	6,600 (6,000)	26,600 (24,100)	46,500 (42,200)	66,500 (60,300)
130 TSFD	42'-0" (12.8)	6,200 (4,700)	27,300 (20,900)	48,300 (37,000)	69,300 (53,000)	8,400 (7,600)	36,800 (33,400)	65,200 (59,100)	93,600 (84,900)
130 TSXTP	45'-6" (13.8)	6,700 (5,100)	27,700 (21,200)	48,700 (37,200)	69,700 (53,300)	9,000 (8,200)	37,400 (34,000)	65,800 (59,600)	94,200 (85,500)
136 TSFD-LP	41'-6" (12.6)	6,900 (5,300)	30,000 (23,000)	53,300 (40,800)	76,500 (58,500)	9,300 (8,400)	40,600 (36,800)	71,900 (65,200)	103,200 (93,600)
150 TSFD	50'-0" (15.2)	9,300 (7,100)	41,000 (31,300)	72,600 (55,500)	104,300 (79,800)	12,600 (11,400)	55,300 (50,200)	98,100 (89,000)	140,800 (127,700)
150 TSXTP	50'-0" (15.2)	9,200 (7,000)	40,100 (30,700)	71,000 (54,300)	102,000 (78,000)	12,400 (11,200)	54,100 (49,000)	95,900 (87,000)	137,700 (124,900)
158 TSFD-LP	47'-0" (14.3)	9,700 (7,400)	40,900 (31,300)	72,200 (55,200)	103,500 (79,100)	13,100 (11,900)	55,200 (50,100)	97,500 (88,400)	139,700 (126,800)
170 TSXTP	58'-0" (17.6)	12,900 (9,900)	56,100 (42,900)	99,300 (76,000)	142,400 (108,900)	17,500 (15,900)	75,800 (68,800)	134,000 (121,600)	192,300 (174,500)
190 TSXTP	66'-0" (20.1)	18,700 (14,300)	82,300 (63,000)	145,800 (111,500)	209,300 (160,000)	25,300 (23,000)	111,100 (100,800)	196,800 (178,500)	282,600 (256,400)
72x190 TSPP	61'-0" (18.6)	16,700 (12,800)	75,700 (57,900)	134,800 (103,000)	193,800 (148,200)	22,500 (20,400)	102,200 (92,700)	181,600 (164,700)	261,600 (237,300)

## PHOTO GALLERY

